

## Electric Lines, Now Hawkeye's Information Highway

**D**id you ever think there would come a time when power lines that were built many years ago would not only serve electricity to you and your family, but could also be used for two-way communication between the meter at your house or farm and a computer at the REC office?

"I like to use the following comparison when explaining the automation process to members," said Mike Walton, Hawkeye's Operations Technology Supervisor. "As Hawkeye's service territory and miles of line have increased drastically over the past 70 years, we have created a "highway" of power lines that connect the members with the substations and with the cooperative headquarters. Hawkeye now has that modern technology right at our fingertips. We utilize this massive "highway" system to enhance member reliability by using technology and information which can travel on that highway."

After many years of researching, observing other cooperatives and strategic planning, your



cooperative has finally started the implementation process of automating Hawkeye's electric distribution system. The automation will provide cooperative staff information regarding power outages, voltage problems, system load factors, and the capability to retrieve automatic readings from the meters.



Operations Assistant Lisa Lienhard with Hawkeye's outage management equipment.

### Cresco substation to be pilot project

The automation upgrade to all of Hawkeye's service territory will require significant financial investment. Therefore, it was decided to implement the equipment in phases starting with a pilot project at the Cresco substation.

The Cresco substation is the best representation of Hawkeye's system design. It is one of the largest substations and has a variety of equipment (both new & old) to implement and test the automation equipment. Because of its close proximity to Hawkeye headquarters, it allows for additional controlled supervision and maintenance of the project.

### Gateway to the Future!

Hawkeye continues to utilize technology maximizing opportunities that will benefit the membership and the cooperative, by reducing outages and improving customer service.

(continued on page 4)

### Inside this issue...

<b>PAGE 2</b>	Manager's Message
<b>PAGE 3</b>	Welcome New Members
<b>PAGE 4</b>	Information Hwy. (cont...)
<b>PAGE 5</b>	Employees honored Outage Map
<b>PAGE 6</b>	Load Management
<b>PAGE 7</b>	Community Commitment Scholarships
<b>PAGE 8</b>	Nominating Committee Annual Meeting Update Home Builders Conf.
<b>PAGE 9</b>	NEC Conference
<b>PAGE 10</b>	High Tech Television Home Safety
<b>PAGE 11</b>	Recipes
<b>PAGE 12</b>	Dates to Remember Youth Tour

*"Our vision is to provide access to safe, dependable and affordable electric services."*



Tom Miller  
General Manager

## **"Plans are nothing; planning is everything."**

*—Dwight D. Eisenhower*

**T**hroughout each month, I look for topics, stories, and fables to illustrate important happenings at Hawkeye REC. President Eisenhower's quote about planning happens to sum up our board's activities in 2004. Your board participated in strategic planning, 2005 business planning and budgeting, and shared services planning. At the heart of all this planning are three things:

*Safety • Affordability • Reliability*

It is hard to deny **safety** as the cornerstone. It is paramount to reliability and affordability. Your board measures every decision against these three reference points. From here the board gives direction by establishing a host of initiatives. Below are the strategic initiatives agreed upon in our recent planning session (in no particular order).

As one can see, there are a number of items to address. It is important to remember that these are broad initiatives, each being able to

positively influence safety, reliability and affordability. These initiatives will take 3-5 years to accomplish. We will begin identifying our goals and objectives for each of these initiatives and implement strategies to meet our goals. Our strategies are identified in the annual budget process and put into action throughout the budget year within the constraints established by your board of directors.

At the December board meeting, your directors approved the 2005 Business Plan including the operating and capital budgets. Below are some highlights to the budget:

### ◆ **No increase in electric rates for 2005**

#### ◆ **\$11.3 million operating budget**

- No increase in wholesale power rate from Dairyland Power Cooperative
- Continued funding of reliability programs
  - ▼ Pole and ground testing
  - ▼ Meter testing
  - ▼ Breaker maintenance
  - ▼ Vegetation management (removing danger trees, brush mowing and spraying)
- 1 new staff addition (apprentice lineman)
- Addition of a member advisory committee for each county

#### ◆ **\$2.8 million capital budget**

- Retiring \$320,000 in patronage capital
- 16 miles of line construction
- 200 new services or service improvements
- Taking the next steps in distribution automation effort
  - ▼ Equip all substations for automated meter reading
  - ▼ Replace all existing electronic meters

## **Strategic Initiatives**

### Member Care

- Member Service department planning*
- Two-way communication with members*
- Local presence and personal touch*

Employee and director education and development

Internal communications

Alliance relationships and outreach

Assimilation of new technology

Aging headquarters building

Economic Development

Succession Planning (board and staff)

Dairyland Power Cooperative

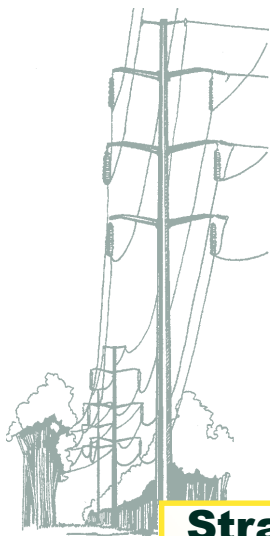
*Wholesale power costs*

*Power capacity limitations*

*Transmission constraints*

Contracted construction crews versus shared construction crews

Distributed generation (like wind, manure digesters, fuel cells, solar energy, etc.)



**As we begin 2005 here are some of the “opportunities” for Hawkeye REC:**

- ▲ Continued erosion of rural residential sales (largest revenue class) is our biggest challenge; we need to increase the average usage by implementing new electric technologies
- ▲ Continued growth in small commercial sales is a positive offset to lower residential sales; we need this trend to continue growing in order to increase our overall sales
- ▲ Weather and the annual corn crop still have a major impact on margins; mild weather decreases sales and bumper crops increase sales
- ▲ Not included in the capital budget but could be on the horizon for 2005 are two new substations (roughly \$1 million of new investment); this is a positive move toward growth and reliability for our system
- ▲ An increase in economic development activities as the economy rebounds which helps residential and commercial growth
- ▲ Although Dairyland Power Cooperative says no rate increase in 2005, both generation and transmission ca-

capacity concerns lurk about the region causing a feeling of pricing instability

The final planning session your board participated in was Hawkeye’s shared arrangements with our neighboring cooperatives. When possible, we try to do things together giving us economies of scale. In turn, this reduces costs allowing us to make investments in needed programs and enables us to have programs we could not have all by ourselves. For instance:

- ◆ We share a compliance and training coordinator
- ◆ We joint bid on various services such as auditing, pole testing, and equipment testing
- ◆ We joint purchase poles, wire, and transformers
- ◆ We share an arborist and joint bid on tree clearing and spraying
- ◆ We participate together in Power Plus Engineering for system design and technical consulting



*Mark Zweibohmer  
Shared Safety &  
Compliance  
Coordinator*

All these things help reduce the cost of delivering electricity to our members. We continue to look for ways to expand our shared activities. Your board fully endorses these activities and continues to encourage us to do more together.

“Plans are nothing, planning is everything,” said President Eisenhower. This referred to understanding the big view of things and knowing where you are going, not necessarily how you get there. Hawkeye REC’s vision is to provide access to safe, affordable and dependable electric services. We are pleased to be your electric energy provider.

*Hawkeye  
participates in  
shared arrangements  
with our neighboring  
cooperatives.*



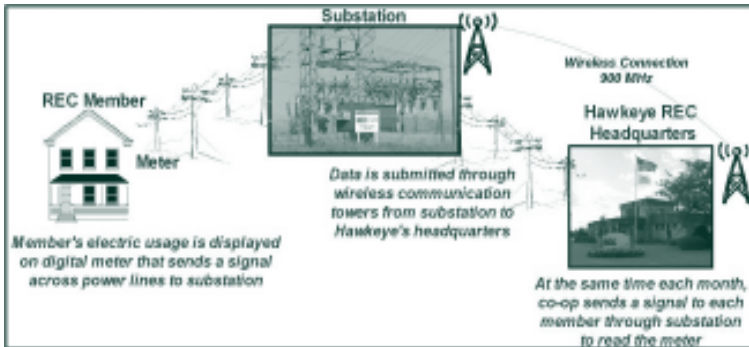
# Welcome

## Hawkeye REC welcomes New Members

Brian Hoffman .....	Cedar Falls, IA	William Richardson .....	Canton, MN
Chad & Sherry Poshusta .....	Spillville, IA	AJ Batzler .....	Highlandville, IA
Brooke & Diane Tappe .....	Decorah, IA	James & Rhonda Perez .....	Decorah, IA
Doug Ransom .....	Decorah, IA	Novian & Katherine Whitsitt .....	Decorah, IA
Roger Halverson .....	Cresco, IA	Sandra Frana .....	Decorah, IA
Aaron Hanson .....	Mabel, MN	Richard & Tara Bigler .....	Decorah, IA
Steven Burke & Bonnie Stackhouse ...	Lime Springs, IA	Kyle Halse & Melissa Baxter .....	Decorah, IA
Elmer & Verna Hoover .....	Ephrata, PA	Michael Franzen & Kayla Holthaus ..	Postville, IA
Dawn Horns .....	Burr Oak, IA	Jessie Halverson .....	Fort Atkinson, IA
Randy Dawley & Sherry Quandahl .....	Decorah, IA		

# Hawkeye's Information Highway... *(continued from cover)*

## What is Distribution Automation?



## Benefits of Distribution Automation:

- ◆ Increase reliability
- ◆ Stabilize rates
- ◆ Predict outages & problems
- ◆ Balance system load
- ◆ Instantaneous power restoral verification and information
- ◆ Increase efficiency for billing
- ◆ Automated meter reading process after implementation is completed in all substations
- ◆ Members will be able to access their usage information via the Internet

## Timeline of Distribution Automation

- 1981 Wholesale power changed to hourly billing
- 1994 Time-of-use rate and meters for large member/owners
- 1999 New substation near New Hampton was built with State-of-the-Art equipment
- 1999-00 Research & planning stages for automated distribution products & companies
- 2000 Microwave Tower was built at Hawkeye
- 2002 Purchased substations from Dairyland Power
- 2003 Upgraded electric system infrastructure
- 2003 Installed substation equipment enclosures
- 2003 Installed digital switches in all substations (aka-RTU's -Remote Terminal Unit)
- 2003 Collaborated with Canon Technologies using their system to best meet the needs of our members
- 2004 Installation of equipment in the Cresco Substation
- 2005 Install equipment in all substations
- 2005 Strategically place meters throughout system to monitor voltage levels
- 2005 Eliminate meter routes read by Hawkeye staff (save time & money)
- 2006-09 Start replacing all residential meters Automating the oil circuit reclosures (OCR's) in substations



By purchasing all of the substations from Dairyland in 2002, Hawkeye has the control needed for the automation projects, including upgrades, repairs and maintenance.

*"I think one of the greatest outcomes of automating Hawkeye's electric distribution system is being able to better accommodate the member/owner. With modern digital technology, we will often know of an outage before the member calls which will allow quicker restoral time in managing an outage."*



—Mike Walton  
Operations Technology Supervisor

# Employees & Directors Honored for Years of Service



*Nine employees and two directors were honored at the annual employee/director recognition banquet in December.*

## 1 YEAR



**Dennis Young**  
Winneshiek County  
Director



**Jim Bakken**  
Lineman



**Dean Nierling**  
Winneshiek County  
Director



**Peggy Berg**  
Chief Financial  
Officer



**Tom Hart**  
Lineman



**Dave Wilkes**  
Line Staking  
Technician

## 5 YEARS

## 10 YEARS



**Tom Miller**  
CEO/General Manager

## 15 YEARS



**Brad Dull**  
Linemen

## 25 YEARS



**Dan Kloberdanz**  
Member Services  
Technician

## 40 YEARS

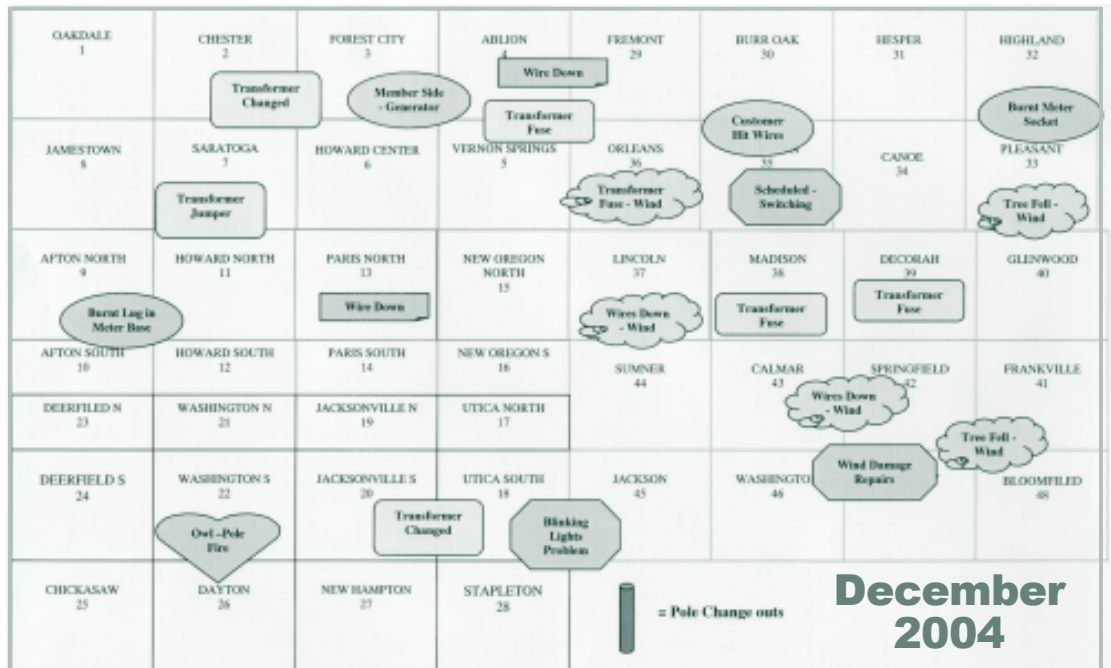


**Dick Jirak**  
System Operator

*Thanks  
for your  
dedication!*

# Map of Outages

**Have you experienced an outage?**  
Shown here is a map of all outage causes for the month of December.



# Load Management Questions and Answers

**D**ue to the fact there have been a number of load control events recently, either caused by cold weather or power plant maintenance, here are some explanations of why load control is important to you as a member of Hawkeye.



***“The dual fuel program offers members a special rate for electric heat kWh’s with a qualified heating backup source.”***

## **When is the load control program employed?**

The program is implemented when demand for electricity threatens to exceed supply. It prevents your power supplier from having to purchase power from the market to cover excess demands, as the cost of purchased power is exceptionally high at times of peak demand. This program protects Hawkeye’s energy costs while ensuring reliable service.

Dairyland Power Cooperative (Hawkeye’s power supplier) has a system of operators who study the loads on a daily and hourly basis. If the operators predict the demand for electricity will exceed its supply, they will broadcast control messages to energy management switches that operate a special network of radio transmitters which send out load-control signals.

These signals are received by special load management receivers located in the

member’s home. Members that have purchased a water heater or participate in the dual fuel program are on the load control program.

## **Why is load management important to Hawkeye REC members?**

Load management helps control the peak demand, which is the greatest demand placed on our electric system, and is used to balance electrical supply and demand. This helps manage our energy costs today and in the future by not having to build new power plants to cover our needs.

Energy cannot be stored and must be used at the time it is produced. There are no storage alternatives for excess energy. The moment you flip a switch in your home or business, electricity flows from a power plant to your home. In order to meet your electrical needs, power plants operate 24 hours a day.

## **Benefits of Load Management**

The water heater program offers water heaters at a cost of \$150 (\$1 for new loads) and free maintenance and repair for the life of the water heater. Most water heaters are large enough to provide your family with hot water during the control period.

The dual fuel program offers members a special rate for electric heat kWh’s with a qualified heating backup source. These members can also elect to have their air conditioners controlled to offer them even more savings on their electric bill while benefiting the load control program.

If you have further questions or concerns about Hawkeye’s load management program, please call the cooperative.

## **December Load Management Events**

<b><i>Demand Reduction Value</i></b>	<b>1,021,000 kilowatts</b>
	<b>\$253,091</b>

(Estimated cost of additional purchased power)

Controlled events (15 days)

Water Heaters Only	7
--------------------	---

Interruptible Heat & Water Heaters	4
------------------------------------	---

Full Load Control (Dec. 20-23)	4
--------------------------------	---

(interruptible heat, water heaters and generators)

<b>Annual Estimated Savings for 2004</b>	<b>\$1.5 million</b>
--	----------------------

# COMMITMENT *to Community...*



*Hawkeye REC employees set poles at the Crestwood High School athletic fields for a new lighting system. Hawkeye values its commitment to area communities throughout the year and this is just one way to show it.*

## Hawkeye REC to Award \$2,500 in Scholarships this Spring!

**T**his is the third year that Hawkeye will be awarding scholarships to local high school seniors. In 2003, Iowa cooperatives persuaded the State to allow unclaimed capital credits funds to be retained at the cooperative for scholarships or for the promotion of economic development instead of forfeiting the funds to the State of Iowa. (If Hawkeye cannot find a current address for a former member, their capital credits are designated as unclaimed.)

This year, Hawkeye is pleased to offer five \$500 scholarships. Hawkeye REC will award the scholarships through area Dollars for Scholars organizations.

### **Who is Eligible to Receive a Scholarship?**

Any graduating high school senior, whose parents or guardians are members of the Cooperative, are eligible.

The applicant must be a student who is enrolled or planning to enroll, in a full-time graduate or undergraduate

course of study at an accredited college, university or vocational/technical school in the fall of 2005. The applicant must be a U.S. citizen.

### **How Do You Apply?**

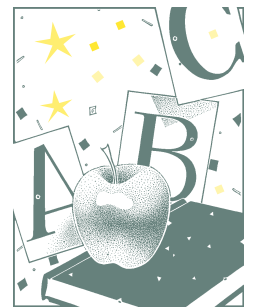
In order to be considered for the 2005 scholarship, completed applications must be received by the Cooperative no later than April 16, 2005. Applications are available at your area high school guidance counselor office or at the REC office in Cresco. Application can also be downloaded and printed on Hawkeye's website at [www.hawkeyerrec.com](http://www.hawkeyerrec.com).

Return the completed application to the Cooperative with the following:

- ◆ Copy of the student's high school transcript
- ◆ Letter of recommendation from a teacher or school administrator
- ◆ Essay explaining how the scholarship will be used in pursuit of future career goals along with a paragraph on Hawkeye's communication plan.

All completed applications are sent to a panel of judges who select the scholarship winners. The judges are not associated with the Cooperative and will give equal consideration to all students.

Mail scholarship information to: Hawkeye REC, Scholarship Program, PO Box 90, Cresco IA 52136.



## **Sales Tax on Energy Phase-out**

Starting January 1, 2005, the sales tax rate will drop to 1% on metered electricity used as energy for residential dwellings. Local option and school taxes will continue to be charged. Starting January 1, 2006, it will drop to 0%.

## 2005 Nominating Committee

### Howard County

Art Bina, Cresco (563) 547-2994

Gary Gassett, Lime Springs (563) 547-2673

### Winneshiek County

Kenneth Ehler, Calmar (563) 562-3895

Keith Sersland, Decorah (563) 382-8211

The nominating committee held their first meeting on January 14 and will meet later in January to post nominations. In accordance with Hawkeye's Articles of Incorporation and Bylaws as amended at last year's annual meeting, a written list of nominations shall be prepared and posted at the principal office of the Cooperative at least sixty (60) days before the Annual Meeting. Any member may be nominated by petition containing the signatures of not less than 1% of the Cooperative membership and such petition must be received by the Secretary no less than forty-five (45) days prior to the meeting.

## Would you like to be a Director?

Candidates for two positions on the Board of Directors of Hawkeye REC will be nominated this month. The 2005 nominating committee will be preparing a list of nominations for director candidates for two director positions, one in Howard County and one in Winneshiek County. The term is for three years.

If you are interested in being nominated as a candidate for one of the director positions or would like to make a recommendation, please contact one of the committee members before January 30.

The following directors are up for re-election this year:



**Howard County**  
Dennis Ptacek



**Winneshiek County**  
Dean Nierling

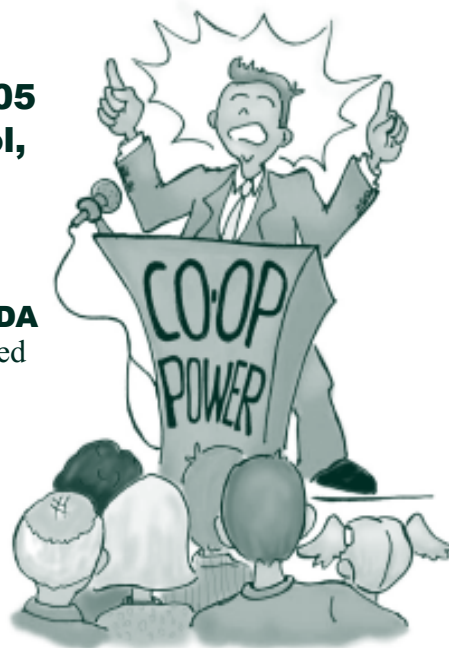
\*\*\* *Reminder* \*\*\*

## Attend Your Cooperative's Annual Meeting!

**Wednesday, April 6, 2005**  
**Crestwood High School,**  
**Cresco**  
**7:00 p.m.**

### ANNUAL MEETING AGENDA

Agenda items need to be submitted by members to Hawkeye by February 16, 2005 for board consideration.



## Building a New Home? Let us help you.

Plan to attend Hawkeye REC's Home Builders Conference

Feb. 22, 2005  
Expo Building  
Howard County Fairgrounds

### Guest Speakers

Bill Mc Nally, Iowa Central Community College

*Foundations: What's New, What Works and How to Information*

Lois Warme, Iowa State University  
*Energy Efficient Home Design and New Interior Materials*

# National Electric Code Review & Conference

Sponsored by your  
Touchstone Energy®  
Cooperative

## March 2005 - Select from six Iowa locations!

- March 9, 2005** – Corn Belt Power Cooperative (www.cbpower.coop)  
1300 13<sup>th</sup> St. North (Highway 169 North), Humboldt IA 50548 • 515-332-2571
- March 10, 2005** – Buena Vista University (www.bvu.edu)  
610 W. Fourth Street, Storm Lake IA 50588 • 712-747-2037
- March 11, 2005** – Wildwood Lodge (www.thewildwoodlodge.com/desmoines)  
11431 Forest Avenue, Clive IA 50325 • 515-222-9876
- March 15, 2005** – Kolby's Dine & Stein  
503 W. Milwaukee (Highway 18 West), New Hampton IA • 641-394-5730
- March 16, 2005** – Maquoketa Valley Electric Cooperative (www.mvec.coop)  
109 N. Huber Street, Anamosa, IA 52205 • 319-462-3541
- March 18, 2005** – Hotel Ottumwa (www.hotelottumwa.com)  
107 E. Second Street, Ottumwa IA 52501 • 641-682-8051



Larry T. Smith, CSP  
Speaker

Each conference will be held 9 a.m. – 3 p.m.  
(registration begins at 8:30 a.m.)

Registration fee - **\$45 per person** (register by March 2); **\$60** (after March 2). (Payment due with registration.)

Fee includes refreshments, lunch and book, *Illustrated Changes in the 2005 National Code and Code Study Guide*.

Do you have questions about the 2005 National Electric Code? Want to learn about the latest Code revisions? **You are invited to a seminar that will include an in-depth study of the National Electric Code.** Larry Smith, one of the few full time professional electrical code trainers/speakers in the country, will lead the conference.

During the conference, we will focus on 2005 changes in the National Electric Code, along with other issues as time allows:

- ◆ Grounding to avoid stray voltage
- ◆ Grounding computer equipment
- ◆ Grounding agricultural buildings
- ◆ Arc-fault circuit interrupters
- ◆ Wiring methods in wet locations
- ◆ Calculating loads of geothermal equipment

*national electric code*

REVIEW & CONFERENCE

### Registration Form

(Make copies of this form if registering more than one person.)

Name \_\_\_\_\_  
Business \_\_\_\_\_  
Address \_\_\_\_\_  
City \_\_\_\_\_ State \_\_\_\_\_ Zip \_\_\_\_\_  
Email \_\_\_\_\_  
Phone \_\_\_\_\_  
Fax \_\_\_\_\_

#### Which conference will you attend?

- March 9 (Humboldt)       March 10 (Storm Lake)  
 March 11 (Clive)       March 15 (New Hampton)  
 March 16 (Anamosa)       March 18 (Ottumwa)

**Registration fee** (Payment must be enclosed. Make check payable to **Power Group**.)

- \$45 (Registration deadline March 2)       \$60 (After March 2)

#### Send form and check to:

Electric Code Conference • Corn Belt Power  
PO Box 508 • Humboldt, IA 50548/

## Watch the Super Bowl at home on newfangled TV

The best place to watch Super Bowl XXXIX on Feb. 6 might be at home.

Makers of television sets have introduced an enviable array of huge screens, clear pictures and high-tech features just in time for the big game. Some examples:

- ◆ Philips Ambilight flat TVs project ambient light onto the wall on either side of the television. You may select from a palate of colors or let the TV adjust the color itself, based on the action on screen. The manufacturer says manipulating the color helps reduce glare and improves the contrast and color of the picture.
- ◆ Although it's not brand new, TiVo can add to your Super Bowl watching experience. If you're in the kitchen getting a cold one and you miss the "Hail Mary" play, you can essentially rewind the game and see what you missed.
- ◆ Some new Sony televisions come with a built-in chip that allows viewers to zoom in, pan or tilt the angle of the image on the screen. The gadget is called the DRC-MFv2, or Digital Reality Creation Multifunction.
- ◆ Plasma TVs are just few inches thick, no matter how large the screen. Traditional models get thicker as the screen gets larger. Plasma sets offer high resolution and exceptional color. Most models can display more than 16 million colors. That's more than the human eye can register.



## Heating season calls for carbon monoxide alarms

Heating season is a good time to make sure the carbon monoxide detectors in your house are working properly. Or, if you don't have any, it's time to install them.

Carbon monoxide is a potential byproduct of burning fossil fuels like gas and oil. It's colorless and odorless, but it's potentially toxic, and can cause everything from dizziness to death.

Stay safe this winter by taking a few precautions:

- ◆ Install a carbon monoxide alarm outside of every bedroom.
- ◆ Replace batteries in the alarm at least twice a year. While you're at it, change the batteries in your smoke alarms, too.
- ◆ If you notice any warning signs that carbon monoxide is at harmful levels in your home—the air is stuffy and stale; condensation appears on windows; burner flames turn yellow; pilot lights flutter or extinguish—turn the appliance off and open the windows. Call a natural gas contractor to inspect the equipment.
- ◆ Properly maintain your furnace, boiler vents and chimneys.



## New Year's Resolution—Throw out wasteful energy habits

Your smoking habit and those extra pounds aren't the only things you should vow to lose in 2005. Resolve to waste less energy around your house. It's actually pretty easy:

- ▼ Turn off lights and appliances when you leave a room, even if you're coming right back.
- ▼ Set your thermostat to a lower temperature before you leave the house for work or go to bed.
- ▼ As you replace your old appliances, choose new ones that sport the Energy Star label, which attests that they are energy-efficient.
- ▼ Install low-flow showerheads.
- ▼ Set your water heater temperature to 120 degrees. Higher temperatures waste energy and can lead to scalding.

# Recipes...

Enjoy watching the Super Bowl  
with friends & family!



Send us your favorite recipe. If we print your recipe in our newsletter you'll receive \$5 off your next electric bill.



February - Way Back When (Old family recipes including a small explanation of where the recipes originated.)

## Crispix Mix

1 lb. butter  
3 c. brown sugar  
¾ c. light syrup  
24 oz. Crispix  
1 1/3 t. vanilla  
1 1/3 t. baking soda  
1 c. cashews (optional)

Melt sugar, syrup and butter and bring to a boil for 3 minutes, stirring constantly. Remove from heat and add vanilla and soda. Stir well, pour over cereal and stir well.

Put in double brown grocery bags and put in microwave for 4 minutes on high. Shake after 2 minutes. Break apart and spread on a cookie sheet to dry.

Bea Taylor – Protivin, IA

## Fruit Dip

8 oz. container of strawberry Cool Whip  
8 oz. carton of strawberry yogurt

(Variations: Can vary with different yogurt flavors mixed with regular Cool Whip)



## Sausage Balls

1 lb. hot breakfast sausage  
1 lb. extra sharp cheddar cheese, grated  
2 ½ c. Bisquick

Mix together very well and form into small balls. Bake in an ungreased pan at 350 degrees for 12-15 minutes or until brown. Serve with either barbeque sauce or mustard dip.



## Roll-Ups

2 large flour tortillas

Mix ¼ c. regular mayonnaise and ¼ c. horseradish mayonnaise and spread on tortillas. Layer turkey, ham, spinach or lettuce and a thin layer of cantaloupe.

Roll tightly and cut into one inch slices.

Try it, you'll like it!



## Cheese Ball

2 – 8 oz. pkgs. cream cheese  
1 – 8 oz. can crushed pineapple, drained  
½ c. finely chopped bell pepper, fresh or frozen  
½ c. onion, finely chopped

Mix all ingredients. Shape into a large ball and roll in 2 c. pecans, finely chopped.

Red, green and yellow peppers add color. Onions may be sautéed in 1 T. butter. Serve with crackers.

Rose Goetsch – Cresco, IA



## DATES TO REMEMBER

### BILLING CYCLE DATES

- Jan. 21** Automated payments by credit cards are processed.
- Jan. 25** Member reads meter and records on payment voucher. Please mail your bill today to make sure it arrives to Hawkeye by the 1<sup>st</sup> of February.
- Jan. 28** Automated payments from checking accounts are processed.
- Feb. 1** Bills become delinquent.
- Feb. 10** Hawkeye REC prints bills based on January meter reading.
- Feb. 11** Bills are mailed to members from Dairyland in LaCrosse.

### OTHER EVENTS

- Jan. 28** Hawkeye REC Board Meeting

## - YOUTH TOUR - High School Sophomores & Juniors Win a free trip to Washington D.C.

**H**awkeye REC is sponsoring a FREE trip to our nation's capitol, June 18-23, 2005. An action packed week awaits this year's Youth Tour participant. He/she will tour historic sites and monuments, meet congressional leaders, explore the Smithsonian museums, take a cruise on the Potomac and meet new friends from Iowa and across the nation! It's a perfect opportunity to travel, work with REC leaders, and enhance your leadership skills! Fill out the form and send to Cindy at Hawkeye REC. You will receive Youth Tour study materials and an open book test which must be completed and returned to Hawkeye by March 25, 2005. The five students with top scores will qualify for the final examination and judging. Judges will select the winner of the Washington D.C. trip and an alternate. For more information regarding the Youth Tour, please visit: [www.hawkeyerec.com](http://www.hawkeyerec.com) or if you have questions, please feel free to contact Cindy at 1-800-658-2243 or 547-3801.

Invest in your future! Sign up now to compete with area students for your chance to win an unforgettable trip to our nation's capitol. Complete application form and return to: Hawkeye REC, Attention: Cindy, PO Box 90, Cresco, Iowa 52136.

### Iowa REC Youth Tour • June 18-23, 2005

Name: \_\_\_\_\_ Age: \_\_\_\_\_ Grade: \_\_\_\_\_

School: \_\_\_\_\_

Signature: \_\_\_\_\_

We certify that we are the parents or legal guardians of the youth who has signed above and that we give our permission for him/her to participate in the Youth Tour 2005 Contest and to participate in the trip to Washington, D.C. should he/she be selected.

Date: \_\_\_\_\_ REC Service Location No: \_\_\_\_\_

Signature(s): \_\_\_\_\_

Address: \_\_\_\_\_

City: \_\_\_\_\_

State: \_\_\_\_\_ Zip: \_\_\_\_\_ Phone: \_\_\_\_\_



*The Power Is Yours*

Box 90 - Cresco, Iowa 52136  
1-800-658-2243 or 547-3801  
[www.hawkeyerec.com](http://www.hawkeyerec.com)

### OFFICE HOURS

Monday thru Friday • 7:30 a.m. - 4:30 p.m.  
(Closed Sat., Sun., & Holidays)

### OUTAGES

**1-800-927-5265**

**IOWA STATE ONE CALL  
1-800-292-8989**

### BOARD OF DIRECTORS

Dean Fisher, President - Lawler  
Dean Nierling, Vice President - Burr Oak  
Dennis Ptacek, Secretary/Treasurer - Elma  
Norman Dickman - Decorah  
John Hockspeier - Alta Vista  
Janelle Mahr - Lime Springs  
Roger Nibaur - Elma  
Charles Frana - Calmar  
Dennis Young - Decorah

### PERSONNEL

Tom Miller, CEO & General Manager  
Roger Halverson, Operations Manager  
Jim Murphy, Information Tech. Manager  
Cindy Christensen, Communications Manager  
Peggy Berg, Chief Financial Officer  
Pat Boyle, Business Dev./Mbr. Serv. Manager

### EDITOR

Cindy Christensen



**Deadline  
March 25,  
2005**

Hawkeye REC  
Box 90  
Cresco, Iowa 52136

PRSR STD  
U.S. Postage  
**PAID**  
La Crosse, Wis.  
Permit No. 372