



Together with our wholesale power supplier, Dairyland Power Cooperative, Hawkeye REC is encouraging energy users to “Do the Bright Thing” by providing our members with ENERGY STAR compact fluorescent light (CFL)

bulbs. Hawkeye will be mailing 2 CFLs to each member.

“Hawkeye REC is committed, along with our members, to help preserve the environment. By using energy efficient appliances and practices, such as replacing regular light bulbs with CFLs, we can make a real impact on both the local—and global—level,” said CEO and General Manager Tom Miller.

Hawkeye is one of the 25 member cooperatives in the four-state Dairyland Power system. Throughout the year, 300,000 ENERGY STAR CFL bulbs will be distributed by Dairyland’s 25 member cooperatives, with more planned in 2009.

(continued on page 14)

Coming soon... to your mailbox!

Hawkeye will be mailing two compact fluorescent light bulbs (CFLs) to each member. The 23-watt CFLs are the equivalent to 100-watt incandescent light bulbs. If every household in the country replaced their five most frequently used incandescent with CFLs, 21 power plants would not need to be built. Do your part by replacing your light bulbs today.



Inside this issue...

PAGE 2	Manager's Message
PAGE 3	Annual Meeting Highlights
PAGE 4	Tree Planting Guide Ditch Burning Iowa One Call
PAGE 5	Evergreen
PAGE 6	Appliance Rebates Energy Efficiency Tip
PAGE 7	Farm Safety Youth Tour Winner
PAGE 8	Outage Map
PAGE 9	For Sale Items
PAGE 10	Kid's Korner
PAGE 11	Rates
PAGE 12	Rebates
PAGE 13	New Maps
PAGE 14	Bright Idea (cont.)
PAGE 15	Recipes
PAGE 16	Dates to Remember Value of Electricity

Grants and Loans Available



USDA Rural Development is offering grants and guaranteed loans to help rural business or agricultural producers looking to produce renewable energy or make energy-saving improvements to their facilities or farms. A popular use of the program has been to assist in the purchase of new, more efficient grain-drying systems.

**Funds are not available for residential use.*

Contact Pat Boyle at (563) 547-3801 for more information and to set-up an appointment for the required energy audit.

"Our vision is to provide access to safe, dependable and affordable electric services."



Tom Miller
General Manager

Annual Meeting Highlights

Our annual meeting is over putting 2007 in the books. I am very appreciative of those members who come year-in and year-out. We had a nice crowd and there were many great questions. Chairman Fisher allowed the majority of the meeting to be focused on the manager's "State of the Cooperative Address." The main message was about being involved in current energy discussions. Here are some of the questions that were asked (paraphrased) at this year's meeting:

- Do members have a share in Websters' Subdivision?
- Will members get dividend checks for the lots sold in Websters' Subdivision and where is the money going?
- Did employees get a raise or cut in pay (referring to the recent rate increase)?
- Why are REC rebates less than Alliant Energy rebates?
- Why is the access charge for the "All Electric" rate less than the access charge for the rural residential rate?
- Why didn't REC put money away to use now for storm damage (referring to the recent rate increase)?
- What day are meters read (referring to the automated meter reading system)?

- How much line loss is there in the transmission system?
- What is more efficient, overhead or underground conductor (referring to line loss)?
- What is the status of nuclear power in the energy discussions?
- Is REC a collection sight for the disposal of CFL's?

If you're interested in the answers, you can find them on our website at www.hawkeyerec.coop. As one can see, there is a good representation of items covered at the annual meeting. Thanks to the members for submitting questions or asking questions from the floor.

Currently, there is plenty of discussion about energy efficiency, global climate change, and renewable energy. Here is your board's position on these issues:

- Any plan to address our carbon footprint must include responsible investments in all resources, including energy efficiency, renewable energy and other generation technologies.
- Responses to climate change must encompass a balanced, common-sense approach that ensures adequate, reliable and affordable electric service.
- We support reasonable solutions that include an economy-wide plan to address greenhouse gases, so that no single industry sector is economically disadvantaged and Iowa's economic growth and prosperity is enhanced.

We are a not-for-profit company and for this reason we support an incentive based approach versus mandates. Usually, the incentives are paid by our government in various forms and mandates are paid by our members through our rates. We ask for fair and cost effective programs.

Our Cooperative is in good shape and the recent increase will help us improve our member's ownership in Hawkeye REC.

If you weren't able to attend the meeting, please fill out this card and return with your next energy bill.



It's time to let Congress know how you feel about our country's energy policy.

During the next year, please send electronic messages on my behalf to my members of Congress regarding these questions:

- ▶ What is your plan to make sure we'll have the electricity we need in the future?
- ▶ What are you doing to fully fund the research required to make emissions-free electric plants an affordable reality?
- ▶ How much will balancing electricity needs and environmental goals increase my electric bill – and what will you do to keep electricity affordable?
- ▶ Do you support The Railroad Competition and Service Improvement Act?

NOTE: We cannot forward your input to Congress unless all of the following blanks are completed.

PLEASE PRINT

Name _____

E-Mail _____

Home Address _____

City _____ State _____ ZIP _____

Co-op Name _____

Signature _____ Date _____

If you didn't make the meeting, we missed you. At Hawkeye REC we are all in this together. Together, we have the power to make a difference.



Our Energy, Our Future A Dialogue With America

Director Election Results

Director incumbents, Dennis Ptacek (Howard District) and Dean Nierling (Winneshiek District) were re-elected to serve 3-year terms on the board. Hawkeye would like to give a special thanks to Lynda Springer for running on the ballot and offering to lend her time and talents to Hawkeye REC. There was no election this year in Chickasaw County.

Howard County



Dennis Ptacek

Winneshiek County



Dean Nierling

Attending your annual meeting is a great opportunity to talk with your board of directors about issues affecting your electric cooperative.



(L to R) Keith & Peggy Sersland and Joyce Jirak served on the ballot committee for the annual meeting. This committee counts and tallies the ballots for the director elections. Their dedication to their electric cooperative is appreciated.



CEO/General Manager Tom Miller, Vice Chairman Dean Nierling and Chairman Dean Fisher present to the membership.



Electric bill credits were given to 30 REC members and all attendees received a free LED flashlight and a CFL light bulb.

Electric Bill Credit Prize Winners

\$100.00	Kenneth Stover	Riceville
\$50.00	Doug Blegen	Decorah
\$50.00	Mark Tieskotter	Waucoma
\$50.00	Richard Ollendieck	Cresco
\$50.00	Dean Darling	Decorah
\$50.00	Everett Schacht	Cresco
\$50.00	Neil Kappes	Elma
\$50.00	Gerald Kach	Cresco
\$50.00	Kevin Larsen	Elma
\$50.00	Ronald Kreitzer	Cresco
\$50.00	Michael Pecinovsky	Calmar
\$25.00	Ronald Hovey	Ridgeway
\$25.00	Dave Malek	Decorah
\$25.00	Duane Hruska	Cresco
\$25.00	Linus Kriener	Fort Atkinson
\$25.00	Lavine Greenslade	Cresco
\$25.00	Melroy Buhr	Elma
\$25.00	Dave Huinker	Decorah
\$25.00	Tom Schatz	Lime Springs
\$25.00	Loretta Stark	Riceville
\$25.00	Delbert Lechtenberg	New Hampton
\$25.00	Donald Schmitt	Fort Atkinson
\$25.00	Vincent Glaser	Alta Vista
\$25.00	Roger Westby	Decorah
\$25.00	Donald Winter	Lawler
\$25.00	Robert Shatek	New Hampton
\$25.00	Francis Meier	Elma
\$25.00	Charles Retterath	Chester
\$25.00	Leonard Soukup	Cresco
\$25.00	Rite Gerleman	Decorah
\$25.00	Richard Tieskotter	Lawler
REA Coaster Set	Leonard Chipera	Waucoma

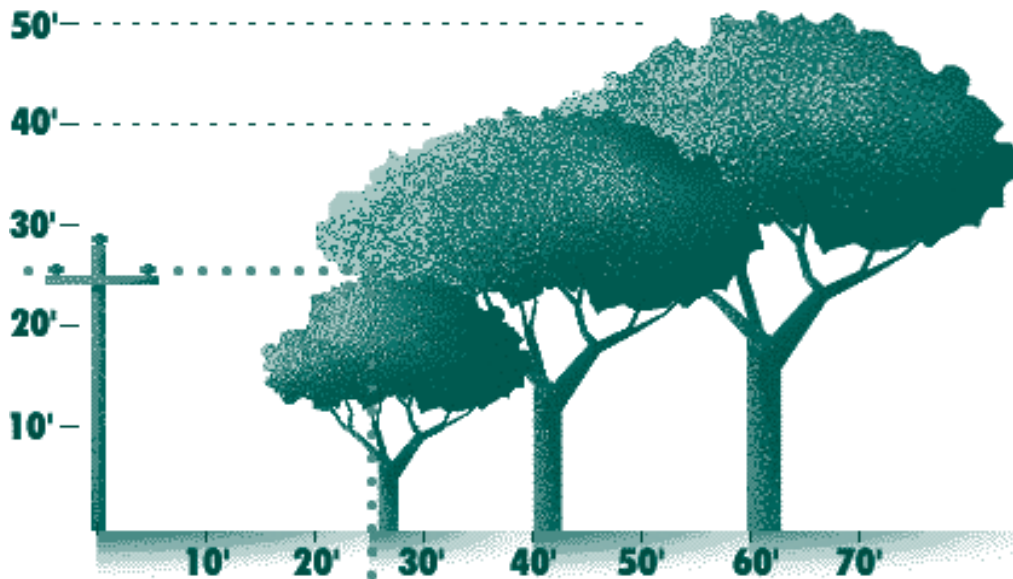
Plant the Right Tree in the Right Place

**Call Before You Dig
It's The Law!
In Iowa call:
1-800-292-8989**

If you plant trees on the southwest and west sides of your home, they can block the sun and dramatically reduce the heat in your house. The Department of Energy estimates that just three trees positioned correctly around a house can

cut the energy used for cooling by one-fourth. And in the winter, those same trees can cut your heating costs by 10-20 percent. But be aware that a tree on the south side of a house can actually increase heating costs in the winter because it casts shade.

Remember that trees and power lines don't mix. If you plant any type of trees near power lines, make sure they're small and will **STAY** small. Also don't forget about underground power lines and other utilities when you're planting. Call Iowa One-Call before you dig.



STOP
No tree zone!
No trees or
oleanders within
25' of power lines

CAUTION
Small tree zone
Plant trees less
than 25' in height/
spread at least 25'
from overhead
power lines

CAUTION
Medium tree zone
Plant trees 25'-40'
in height/spread
at least 40' from
overhead power lines

GO
Large tree zone
Plant trees larger than
40' in height/spread
at least 60' from
overhead power lines

Shrubs
(Height: 4' - 10')
Arrowwood, Azalea, Burning
Bush, Bush Honeysuckle,
Caragana, Chokecherry,
Cotoneaster, Cranberry Bush
Currant, Dogwood, Hydrangea,
Juneberry, Lilac, Ninebark,
Potentilla, Sumac

Small Trees
(Height: 10' - 15')
Amur Maple, Flowering
Crabapple, Flowering Dogwood
Hawthorn, Eastern Red Cedar,
Russian Olive, Canada Cherry,
Ironwood, Mountain Ash,
Nanking Cherry

Medium Trees
(25' - 40')
Ash, Marshall Seedless, Birch,
Paper & River, Butternut, Honey
Locust: Sunburst, Shademaster,
Skyline, Littleleaf Linden,
Norway Maple, Pear, Bradford

Large Trees
(40' - 70')
Basswood, Bur Oak, Pin Oak,
Elm, Sugar Maple, Hackberry,
Ginkgo, Black Walnut, Catalpa
Pines: Austrian, Red, Scotch,
White, Spruce

**ALWAYS
CALL
BEFORE YOU
DIG**

811

One free, easy call gets your utility lines marked AND helps protect you from injury and expense.

Safe Digging Is No Accident:
Always Call 811 Before You Dig

Know what's below. Always call 811 before you dig.
Visit call811.com for more information.

Ditch Burning

BE CAREFUL!

**Pole replacements could
cost YOU up to \$1,000!**

**To prevent a pole from burning, remove
dead vegetation around the pole or soak
the area around the pole with water.**

Earth Day April 22, 2008



As we celebrate Earth Day on April 22, we wanted to give you an update on the current status and future plans of the Evergreen program. Through this program, electric cooperative members in the Dairyland Power Cooperative (DPC) service territory have the opportunity to voluntarily support the development and research of large-scale renewable electric generation facilities.

With your continued support, your cooperative and our power supplier, DPC, have been leaders in the development of renewable energy application."



Future Plans

- In 2007, DPC increased their landfill capacity by 5.8 MW and add an additional 1 MW of methane digester capacity
- DPC is also working toward adding an additional 20 MW of wind generation in 2008. To learn more about the Evergreen program and our cooperative system's renewable energy resources, please visit DPC's new website: www.dairynet.com.

Combining our resources and working together is the best way to develop more renewable electric generation in the future.

DPC renewable generation has the capacity to help power...

Wind Turbine	13,505 homes*
Methane Digester.....	1,752 homes*
Landfill Gas.....	8,030 homes*
Hydro Power.....	16,790 homes*
Total of	40,077 homes*

For comparison, Hawkeye REC currently has about 6,569 electric services.

EvergreenSM

YOUR ENERGY CHOICE FOR THE FUTURE



✓ Yes, I want to participate in Evergreen!

Signs me up for ___ block(s) of energy at \$1.50 per block for a total of \$ _____. I understand that this amount is in addition to my monthly energy bill. Also, that my commitment is for one year and will continue monthly thereafter until I notify my cooperative that I no longer wish to participate.

Name _____ Address _____

City _____ State _____ Zip _____

Electric Account Number _____ Signature _____ Date _____

Mail to: Hawkeye REC
PO Box 90
Cresco, IA 52136

Use appliances smarter to save energy

Whether you have the newest, most efficient electric appliances or you're hanging onto some that practically qualify as antiques, you can use them smarter so they waste less energy.

Here are some free and easy ways to cut waste—and your energy bill:

- ▶ Move your refrigerator away from the stove, dishwasher and heating vents. The heat from those devices makes the refrigerator work harder to stay cold, so it runs less efficiently.
- ▶ If your refrigerator's coils are exposed, vacuum them every three months. When dirt builds up on the coils, the appliance has to use more energy to keep your food cold.
- ▶ Repair the gaskets on your refrigerator's door if they come loose. Damaged gaskets let cold air leak out of the refrigerator.
- ▶ If your old freezer doesn't self-defrost, do it yourself—as soon as a quarter-inch of ice builds up. An ice-laden freezer is inefficient.
- ▶ Stop rinsing dishes by hand before you load them into the dishwasher, especially if yours has a pre-rinse or rinse/hold cycle. Simply scrape leftover food from the plates and let the dishwasher do the rest.
- ▶ Set your dishwasher to its “energy-saver” feature and leave it there so it saves energy every time you use it.
- ▶ Match the size of your pots and pans to the size of the stovetop burner you're using. Placing a small pot on a large burner wastes a lot of heat.
- ▶ Cover pots and pans with lids so you can cook at a lower burner setting.
- ▶ Select the “small load” setting on your washing machine when you don't have enough laundry to fill the tub. At that setting, the washer will fill with less water.
- ▶ Clean your clothes dryer filters after each load. This not only keeps the appliance from overheating and working too hard, it can prevent a fire.
- ▶ Set your water heat to 120 degrees. That's hot enough, even though some manufacturers pre-set theirs to 140 degrees.

Appliance Rebates

Effective May 1, 2008 (invoice date)

Requirements:

- Must be a member of Hawkeye REC
- Appliance must be purchased in Chickasaw, Howard or Winneshiek counties
- Rebate must be submitted to Hawkeye within 90 days of purchase
- Rebate will be applied to your electric account
- Please attach a copy of your purchase receipt
- *To receive the Energy Star rebate, you must include a copy of the Energy Star decal from the appliance.

The rebate form can be downloaded at www.hawkeyerec.coop or you can call to request a copy be mailed to you. All appliance retail stores also have copies.

ELECTRIC RANGE

\$25

REFRIGERATOR

\$15 w/o Energy Star Rating
\$25 w/ Energy Star Rating

DISHWASHER

\$10 w/o Energy Star Rating
\$20 w/ Energy Star Rating

ELECTRIC DRYER

\$25

WASHER

\$20 w/o Energy Star Rating
\$50 w/ Energy Star

Plant Seeds of Caution Around Power Lines

The risk of electrocution remains one of the greatest hazards on Iowa farms. Before heading back into the fields this spring, Hawkeye REC reminds farm workers to be particularly alert to dangers near overhead power lines.

Simply coming too close to a power line while working is dangerous as electricity can arc or “jump” to conducting material or objects, such as a ladder, pole or a truck.

Many farm electrical accidents involving power lines occur when loading or preparing to transport equipment to fields or while working on farm machinery near power lines. Sometimes a power line is closer than it looks. When moving large equipment or high loads near a power line, always use a spotter to help ensure that contact is not made with a line.

Quick Tips

- Know the location of overhead power lines and remind workers to keep farm equipment at least 10 feet away from them.
- Be aware of increased height when loading and transporting tractors on trailer beds.
- Avoid raising the arms of planters, cultivators or truck beds near power lines.
- Many tractors are now equipped with radios and communications systems that have antennas extending from the cab to 15 feet above the ground.
- Never attempt to raise or move a power line to clear a path.
- Consider moving or burying power lines around buildings or busy pathways where many farm activities take place. When planning a new out building or farm structure, contact Hawkeye REC for information on minimum safe clearances from overhead and underground power lines.
- Before excavating or digging, remember to call Iowa One at 811 at least 48 hours in advance so that the location of underground utilities can be marked.



Kendal Quandahl wins trip to Washington D.C.

Kendal Quandahl, a junior from Crestwood High School, won an exciting and educational fun filled week of adventure at Hawkeye REC’s Youth Tour contest. Kendal is the daughter of Dean and Linda Quandahl of Cresco. She will join 40 students from Iowa along with 1,200 students from all over America June 14-19. These students are sponsored by their local rural electric cooperatives.

tour historic sites, cruise the Potomac, explore the Smithsonian museums, and make new friends from Iowa and across the nation. The students will learn first hand about our government and its history, their responsibilities as citizens, and how they work together. Upon returning from the Youth Tour, students are filled with inspiration and better understand how cooperative efforts keep our country great.

The students will explore Washington, D.C., spend a day on Capitol Hill, meet our congressional leaders and see our government in action. They will also

The Iowa Association of Electric Cooperatives, the Des Moines based service organization for the state’s RECs, coordinates the Youth Tour.

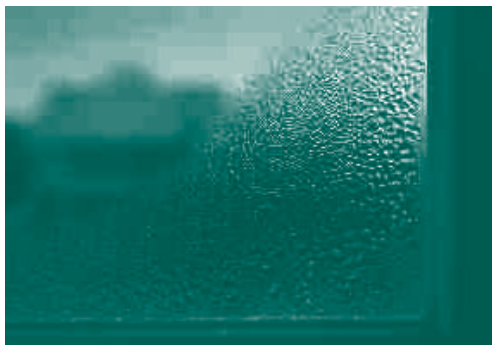
Hawkeye’s 2008 Youth Tour winner Kendal Quandahl of Cresco.



Have a Mold-Free Spring

Moisture from melting ice and snow can have an unexpected consequence: mold.

Indoor humidity and leaky windows aren't the only ways moisture, which sets the stage for mold growth, can show up. A poorly insulated roof can let in just as much moisture from the melting white stuff.



Also, because warm air rises, a poorly ventilated home will allow a build-up of heat in the attic—just enough to warm your roof's shingles and melt the bottom layer of snow or ice that could be sitting on your roof. When water reaches the edge of the roof, it can refreeze and create a "dam". This traps the rest of the water. With nowhere to go, the moisture can seep down through shingles and into the house.

Prevent this by adding more insulation to your attic. Or invest in electrical cable for the edge of your roof. This can melt ice dams, letting water flow more freely off your roof.

Other easy ways to keep mold-producing moisture out of your home:

- ▲ If humidity is a problem in your home when it's warm outside, fight it. Pick up a humidity sensor at a home store. Use it to monitor the relative humidity in your home (it should be less than 55 percent). Or buy small humidifiers to help solve the problem.
- ▲ Replace rusty pipes to prevent water leaks. Insulate pipes for an extra layer of protection.
- ▲ Install an exhaust fan in your kitchen and in each bathroom.
- ▲ Condensation on windows is a telltale sign that your home is too humid. Seal windows with caulk and weather-stripping.

Map of Outages

OAKDALE 1 	CHESTER 2	FOREST CITY 3	ALBION 4	FREMONT 29	BURR OAK 30	HESPER 31	HIGHLAND 32
JAMESTOWN 8 	SARATOGA 7	HOWARD CENTER 6 	VERNON SPRINGS 5 	ORLEANS 36	BLUFFTON 	CANOE 34 <i>Open fuse</i> 	PLEASANT 33
AFTON NORTH 9	HOWARD NORTH 11	PARIS NORTH 13	NEW OREGON NORTH 15 	LINCOLN 37 <i>Open fuse</i>	MADISON 38 	DECORAH 39 <i>Weather-Hot Line Clamp</i> <i>Line Fuse Insulator</i> 	GLENWOOD 40 <i>Insulator</i>
AFTON SOUTH 10	HOWARD SOUTH 12	PARIS SOUTH 14	NEW OREGON S 16 	SUMNER 44	CALMAR 43 	SPRINGFIELD <i>Weather-Hot Line Clamp</i>	FRANKVILLE 41
DEERFILED N 23	WASHINGTON N 21	JACKSONVILLE N 19	UTICA NORTH 17	JACKSON 45	WASHINGTON 46 	MILITARY 47	BLOOMFILED 48
DEERFIELD S 24	WASHINGTON S 22	JACKSONVILLE S 20 	UTICA SOUTH 18	STAPLETON 28 			
CHICKASAW 25	DAYTON 26 <i>Open fuse</i>	NEW HAMPTON 27					

= Pole Change outs = Single Outage = Planned Outages

March 2008

Have you experienced an outage lately?

Items For Sale

The following used items are for sale "as is". Please submit a sealed bid to the REC office by Monday, May 12th. Call the office to set-up an appointment if you would like to look at any of the items.

Please address the envelope:

Hawkeye REC
 Sealed Bid, Attn: Karen
 PO Box 90 • Cresco, IA 52136

3 Oil Drums (older, but in working condition)
 Standard Oil Company
 • Tags on Pumps: MA-11097
 • Tags on Tanks: M&E 19-842



3 Chain Saws

- (1) Husqvarna 346X
- (1) Stihl 026
- (1) Stihl 024AV (without bar)

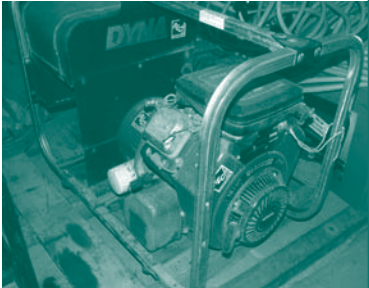
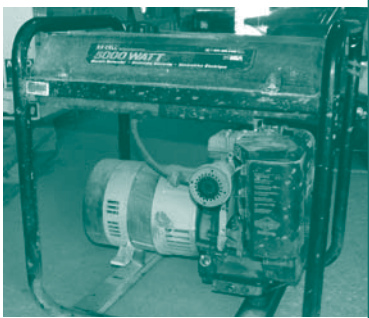
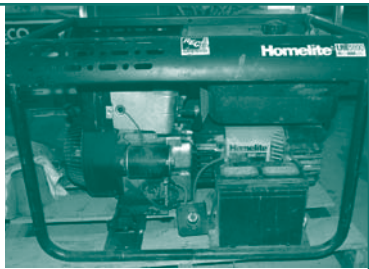


1 Tin Building
 • Size: 10'L X 7'H X 8'W



3 Generators

- (1) Homelite: LRE
 5,500 watts
 11 HP
- (1) Ex-Cell:
 5,500 watts
 10 HP
 Briggs 2 strattion
- (1) Vanguard-Dyna:
 120/240 volt
 8,000 watts
 16 HP
 V-Twin ORV



1 Cushman Trackster

- 1975
- Model #898000



1 Polaris Big Boss 6X6

- 350L
- 1039 miles
- 1993



Look for the ENERGY STAR!

Hidden in the puzzle are objects or places you might find the ENERGY STAR label. Try to find all the words and then look for the ENERGY STAR in your home.

- | | | |
|-----------------|--------------|-------------|
| DISHWASHER | WINDOW | CEILING FAN |
| WASHING MACHINE | LIGHTBULB | SCHOOL |
| PHONE | COMPUTER | HOTEL |
| TELEVISION | STEREO | |
| THERMOSTAT | REFRIGERATOR | |



From the Creators of **ICE AGE**
 Dr. Seuss'
HORTON
 HEARS A WHO!
 ONLY IN THEATERS

Go to energystar.gov to use an interactive puzzle.
Need the answers? Go to www.hawkeyerec.coop
 or energystar.gov.

Students Become Energy Stars!!

with help from Horton and the Mayor...

Hawkeye REC partnered with Energy Star and provided educational pieces to all area schools promoting energy efficiency showcasing characters from the popular movie and Dr. Seuss book "Horton Hears A Who". Horton and the Mayor urge kids to do their part in the fight against global warming by making easy changes in our homes, at school and at work. Learn more at energystar.gov.

Elementary students from Decorah enjoyed reading about ways they can help protect the environment and save our planet with Energy Star booklets given by Hawkeye.



New Rates and Fees

(Effective March 1, 2008 and reflected on the April bill. Notice sent to all members in January)

	New Rate	Previous Rate	
Single Phase (rate classes 1,5,10,40)			
Monthly Access Charge	\$ 27.25	\$ 27.25	
Hawkeye Delivery	\$.0513 per kWh	\$.037	+.0143
DPC Energy	\$.061 per kWh	\$.061	(EAC Base)
All Electric Residential Rate (rate class 2)			
<i>(Residential heat pump only, no fossil fuel, water heater must be controlled)</i>			
Monthly Access Charge	\$ 24.50	\$ 24.50	
Summer Rate (May-Oct)	\$.091 per kWh	\$.091	
Winter Rate (Nov-April)	\$.080 per kWh	\$.080	
<i>Whole house (not farm), Usage must be determined (minimum 8-9 KW), if parallel must be converted to main meter</i>			
Interruptible Rate (rate class 111, 113, 114, 115, 116, 211)			
Summer Rate (May-Oct)	\$.088 per kWh	\$.088 per kWh	
Winter Rate (Nov-April)	\$.058 per kWh	\$.058 per kWh	
Adding \$4.50 meter charge	\$ 4.50	\$ 0.0	+\$4.50
<i>(rebateable at the end of the year if use is over 4,000 kwh's) Minimum of 8 KW. If primary heat source, must have automatic backup except for garages and shops that can stand possible 12 hour control periods.</i>			
Electric Heat Rate (rate class 101, 103, 104, 105)			
Monthly Access Charge	\$ 9.00	\$ 9.00	
Hawkeye Delivery	\$.0263 per kWh	\$.0120	+.0143
DPC Energy	\$.058 per kWh	\$.058	
Peak Alert Rate (rate class 25)			
Monthly Access Charge	\$ 40.00	\$ 40.00	
Summer Rate (May-Oct)	\$.0585 per kWh	\$.050	+.0085
Winter Rate (Nov-April)	\$.0515 per kWh	\$.0430	+.0085
Non-Coincidental Peak Charge	\$ 6.85 per KW	\$ 6.85	
Coincidental Peak Charge	\$ 5.05 per KW	\$ 5.05	
Small Time Of Use Rate (rate class 28)			
<i>(greater than 50 kVa transformer or 3-phase accounts)</i>			
Monthly Access Charge	\$ 40.00	\$ 40.00	
All kWh's	\$.0502	\$.040	+.0102
Non-Coincidental Peak Charge	\$ 6.44 per KW	\$ 6.44	
Coincidental Peak Charge	\$ 9.90 per KW	\$ 9.90 per kW	
Miscellaneous Charges			
Interest rate paid on deposits	2.00%		
Return Check Fee	\$ 25.00		
Posting Fee for non-payment	\$ 35.00		
Trip Charge	\$ 75.00		
Disconnect Fee	\$ 100.00		
Reconnect Fee	\$ 100.00		
After Hours Reconnect Fee	\$ 250.00		
Idle Services	\$ 160.00		
<i>All rates above are subject to 7% tax</i>			
Optional Services Offered			
Non-metered Security Light	\$ 9.82 monthly charge		
Requested meter test	\$ 25.00		
Evergreen (renewable energy program)	\$ 1.50 per block		
RECare Contribution (assistance fund for members in need)	\$ member's choice		

Energy Efficiency Programs and Rebates

Heating & Cooling Rebates

Resistance Heating*	\$ 10.00	per kW (\$200 max)
ETS Heating*	\$ 30.00	per kW (\$1,000 max)
Electric Boiler*	\$ 25.00	per kW (\$400 max)

Electric Heat Pumps

Geothermal*	\$ 60.00	per ton
Air-to-Air*	\$ 60.00	per ton (must be on load management)

Efficient Central Air Conditioner

SEER 14.....	\$ 60.00	per ton (must be on load management)
--------------	----------	--------------------------------------

Energy Efficient Retrofit Lighting Program

5 count minimum requirement

This program is available only to agricultural, commercial and industrial members who wish to improve the efficiency of existing retrofit lighting systems.

Electronic Ballasted Fluorescent Fixtures	\$ 6.50	per ballast
Metal Halide Fixtures	\$ 10.00	per fixture
Sodium Vapor Fixtures	\$ 10.00	per fixture

**qualifies for the interruptible rates*



Marc Mikkelson

Water Heater Program (80-gallon)

Must be under load management control program. All water heaters on load control receive free parts and service.

Electric Replacement	\$ 150.00
New Load.....	\$ 1.00
Gas Replacement	\$ 1.00
Water Heater Disposal	\$ 20.00

(Hawkeye will dispose)



What is the Load Management Program?

It is a program to help balance supply and demand. Load management involves techniques such as interrupting water heaters or air conditioners for short periods of times, and controlling when irrigation pumps or grain drying systems run. This reduces the Dairyland system's total demand during peak use hours, generally between 3 and 9 pm. Extremely warm

or cold weather also create an enormous amount of demand on the energy system, with the increase in air conditioner and furnace use.

Residential water heaters can be controlled up to 4 hours during peak energy hours.

Going the extra mile (or foot)

Winneshiek County Helps Make Hawkeye's Maps State-of-the-Art

It's hard to imagine that just a few years ago, Hawkeye employees relied on service territory maps that didn't even have roads marked. In the past year, things have changed dramatically thanks to new technology and cooperation from the Winneshiek County Engineer's Office. GIS (Geographic Information System) and GPS (Global Positioning System) coordinates along with ESRI (Environmental Systems Research Institute) technology have created a map much more complex providing accurate measurements down to one foot!

"We just needed more accurate maps," states Hawkeye's Line Staking Technician Dave Wilkes. "When we lost many miles of line in the 2007 ice storm we had to rely on our maps to stake and re-build those lines. We were pretty much out of luck as we were not able to tell how many poles there were from our old maps."



Dave Wilkes

Thanks to the help of John Lubke, Winneshiek County's GIS Coordinator, Hawkeye had the opportunity to exchange maps that would benefit both organizations. Winneshiek County maps included road data, aerial photography, bridges, parcels, property landowners and county right-of-ways.



With this integration, Hawkeye now has state-of-the-art maps that will provide better customer service to the membership.

Starting a few years ago when any new service was staked or when a new AMR meter was installed, everything was documented with GPS coordinates (poles, meters etc.). Individual poles and meters are marked on the new maps.

Benefits of the new map:

- ▲ Precise number of poles and miles of line
- ▲ Color coded roads (highways, gravels etc.)
- ▲ Bridges
- ▲ Driveways and 911 addresses
- ▲ Aerial photography
- ▲ Parcels
- ▲ Landowners and property lines
- ▲ Exact location of meters
- ▲ County owned Right-of-Ways (ROW)

Laptops have also been purchased for three line trucks enabling linemen to look at current map data instead of relying on paper maps which are only updated monthly.

Now, all new services and changes to lines are updated daily.

Hawkeye is currently working with Chickasaw and Howard Counties to obtain map data to complete the mapping project.

"Winneshiek County is excited to provide to our public and private utilities, digital spatial data. These base layers should greatly enhance Hawkeye REC's GIS system. By sharing digital information, both organizations are benefiting by having very accurate and timely information."

- John Lubke

NOTICE:

Acculine, Hawkeye's contracted company, is gathering GPS data throughout Hawkeye's service territory. They will be using ATV's and pickups and will be working late nights and possibly even weekends. Please call the REC office if you have any questions.

Do the bright thing...

(continued from cover)



By using energy efficient appliances and practices, such as replacing regular light bulbs with CFLs, we can make a real impact on both the local—and global—level.”

—CEO and General Manager Tom Miller.



*Earth Day
April 22, 2008*

“Anyone interested in helping protect the environment can make a truly significant difference by choosing to conserve energy in their homes and offices. One of the best and easiest ways to accomplish this is by switching out standard light bulbs with energy efficient CFL bulbs,” said Ed West, who leads Dairyland’s energy efficiency initiatives.

ENERGY STAR qualified CFLs use about 75 percent less energy than standard incandescent bulbs and last up to 10 times longer. By installing CFLs in fixtures that are used the most in your home (such as your kitchen, living room or dining room), you can save approximately \$30 or more over the lifetime of each bulb.

Dairyland and Hawkeye are hoping the CFL donation will encourage people to make energy efficiency a priority and change out more of their bulbs. As an example of this program’s potential impact, 300,000 19-watt CFL bulbs burned for three hours a day over the lifetime of the bulbs would save enough energy to:

- ▲ Power more than 1,200 homes for a year
- ▲ Save more than \$20 million in energy costs
- ▲ Reduce the demand for electricity in Dairyland’s cooperative system by almost 8 megawatts

▲ Prevent greenhouses gases equivalent to the emissions of over 21,800 cars in one year OR planting 31,000 acres of forest

Facts about CFLs

CFLs come in a variety of shapes and sizes to meet your lighting needs. Be sure to select a CFL bulb with the correct style and wattage you need. Manufacturers include equivalency information on the packaging to help consumers choose a bulb that produces the amount of light desired for each application.

CFL Disposal

Because CFLs contain a small amount of mercury, they should be recycled. Hawkeye REC is a drop-off site for your burned out or broken CFL bulbs. For more information on CFLs, including breakage or disposal, go to Hawkeye’s website, www.hawkeyerec.coop or to www.energystar.gov.

Purchase CFL light bulbs at Hawkeye today for:

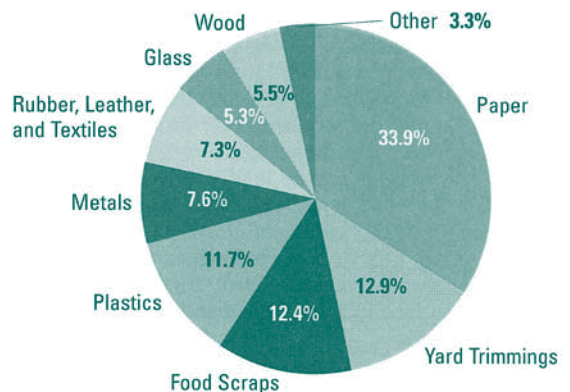
- 14 watt (60 equivalent).....\$1.50
- 23 watt (100 watt equivalent) ...\$2.50



Did You Know?

Americans Make A Lot of Garbage

All that garbage we toss out adds up. In 2006, Americans produced 251 million tons of trash, according to the Environmental Protection Agency, which says it works out to around four-and-a-half pounds daily per person. The good news is that not all of those leftovers, papers, yard trimmings and other refuse wound up in a landfill. EPA reported recently that 82 million tons, almost one-third, was recycled. Not only is that an Earth-friendly policy, it’s also good for the economy. According to the government, recycling is a \$200 billion enterprise that puts more than 1 million people to work.



Recipes...

Did you know that 7% of the American population suffer from diabetes? Here are some popular recipes for diabetics. Another good tip is to just change your eating habits by simply eating less at each meal.

Flax Seed Muffins

¾ c. whole wheat flour	½ c. graham cracker crumbs
½ c. Splenda	½ t. salt
2/3 c. skim milk	1 t. baking soda
¾ c. plus 2 T. ground flax seed	1 t. baking powder
½ c. instant oatmeal	1 t. cinnamon
1 c. unsweetened applesauce	1 t. vanilla
1 egg	

Mix all ingredients together, divide between 14 paper-lined muffin cups. Bake at 400° for 18 minutes.

Nutrition information in each muffin:

90 calories

3 grams fiber

1 carb. per serving

1 T. flax seed

Mrs. Marvin Bergmann – Decorah, IA

Rhubarb and Apple Crumble

Filling:

3 c. peeled, cored, ¾-inch cubed
Granny Smith apples
2 ½ c. ¾-inch cubed fresh red
rhubarb
½ c. Equal® Spoonful*
2 T. cornstarch
1/3 c. water or apple juice
1 T. lemon juice
1 t. grated lemon peel (optional)

Topping:

¾ c. quick or old-fashioned oats,
uncooked
¼ c. raisins
¼ c. chopped nuts
1/3 c. Equal® Spoonful**
2 T. stick butter or margarine,
melted
½ to ¾ t. ground cinnamon
Frozen yogurt, ice cream or
whipped topping (optional)

1. For Filling, combine apples, rhubarb, Equal® and cornstarch. Place in 1 ½ quart casserole dish.
2. Combine water, lemon juice and lemon peel. Pour over fruit mixture. Cover and bake in preheated 400°F oven 20 to 25 minutes or until fruit is tender.
3. Meanwhile, for Topping, combine oats, raisins, nuts, Equal®, melted butter and cinnamon until well blended. Remove cover from fruit. Sprinkle with oats mixture.
4. Return to oven and bake uncovered an additional 8 to 10 minutes or until topping is crisp. Serve warm with frozen yogurt, ice cream or whipped topping, if desired.

Makes 6 servings.

* May substitute 12 packets Equal sweetener

** May substitute 8 packets Equal sweetener

Nutrition Information Per Serving:

calories 177, protein 3 g, carbohydrate 26 g, fat 8 g, cholesterol 10 mg, sodium 45 mg.

Food Exchanges: 1 fruit, 1 starch, 1 1/2 fat.

Merisant Corporation © and the NutraSweet Company, makers of Equal®

Send or e-mail your favorite recipe. If we print your recipe in our newsletter you'll receive \$5 off your next electric bill. E-mail to: mmoellers@hawkeyerec.com



May – Sandwich recipes

June – Cooking for a crowd

All recipes can be found on our website.

Fruit Salad

1 large can pineapple (undrained)
1 can mandarin oranges (undrained)
1 box sugar-free instant vanilla pudding
Grapes, strawberries, bananas and any other desired fruit

Pour canned fruit with juice in bowl and add the dry pudding mix. Mix well and then add other fruit. Let set overnight.



Sugar Free Cocoa Mix

2 c. nonfat dry milk powder
½ c. lowfat powdered non-dairy creamer
½ c. baking cocoa
10 packets artificial sweetener (Equivalent to 3 T. sugar)
¾ t. ground cinnamon

Combine all ingredients and store in an airtight container. For each serving, add 1/3 c. mix to ¾ c. boiling water; stir to dissolve.

(Makes 8 servings)

This was one of Carter's favorite things after playing in the snow this winter! Carter is the son of Brad Dull, Hawkeye's Line Foreman. He was diagnosed with Type 1 Diabetes when he was 17 months old. Carter is now nine years old and is in the 3rd grade at Notre Dame Elementary School in Cresco. Carter and his family are active in the fight against Juvenile Diabetes. They participate in an annual walk to help raise money for research.

Carter Dull – Cresco, IA



DATES TO REMEMBER

BILLING CYCLE DATES

- April 25** Member reads meter and records on payment voucher. Please mail your bill today to make sure it arrives to Hawkeye by the 1st of May.
- April 28** Automated payments from checking accounts and credit/debit cards are processed.
- May 1** Bills become delinquent.
AMR Readings
- May 12** Hawkeye REC prints bills based on April meter reading.
- May 13** Bills are mailed to members from NISC in St. Louis.

OTHER EVENTS

- April 25** Hawkeye REC Board Meeting

The value of \$35

Would you rather pay \$35 for an expensive steak dinner at a restaurant or enjoy grilled steaks "just the way you like 'em" in your own backyard?



You can grill
for 24-hours a
day for 13 days
for \$35

Purchase your electric grill
from Hawkeye today and
start the summer off right!



*Price is based on 11¢ per kWh.

The value of Electricity



The Power Is Yours

A Touchstone Energy® Cooperative 



The Power Is Yours

Box 90 - Cresco, Iowa 52136
1-800-658-2243 or 547-3801
www.hawkeyerec.coop

OFFICE HOURS

Monday thru Friday - 7:30 a.m. - 4:30 p.m.
(Closed Sat., Sun., & Holidays)

OUTAGES

1-800-927-5265

IOWA STATE ONE CALL
1-800-292-8989

BOARD OF DIRECTORS

Dean Fisher, President - Lawler
Dean Nierling, Vice President - Burr Oak
Dennis Pracek, Secretary/Treasurer - Elma
Norman Dickman - Decorah
John Hockspeier - Alta Vista
Janelle Mahr - Lime Springs
Roger Nibaur - Elma
Charles Frana - Calmar
Dennis Young - Decorah

PERSONNEL

Tom Miller, CEO & General Manager
Roger Halverson, Operations Manager
Jim Murphy, Information Tech. Manager
Cindy Christensen, Communications Manager
Peggy Berg, Chief Financial Officer
Pat Boyle, Business Dev./Mbr. Serv. Manager

EDITOR

Meagan Moellers

Hawkeye REC
Box 90
Cresco, Iowa 52136

PRSR STD
U.S. Postage
PAID
La Crosse, Wis.
Permit No. 372