

Have a taste of the “sweet life”

Wood-fired pizza at its best

People dream of making money.... living in a bigger house....retiring early. Jim and Brenda McCaffrey of rural Decorah dreamed of pizza. They also dreamed once again of owning their own restaurant together. After many years of planning, traveling abroad and designing, their dream has become a reality.

McCaffrey's Dolce Vita and Twin Springs Bakery opened in October. The restaurant is located approximately two miles from Decorah. Jim and Brenda were serious about getting it perfect for their future patrons. They were so serious that they ventured to Italy to observe just how the thin-crust pizzas were made and took artisan baking classes.

We all know how important family is in Italy, but it is important in America too! Not only does the restaurant stand on their half-century family farm, their three adult children Shanon, Fawn and Conor are highly involved and part-owners in the family business. Jim and Brenda owned two restaurants during the 80's and wanted to get back to that life. "We wanted to work together again...simple as that." explained Jim in describing their business.

The wood fired pizza oven that can bake pizzas in 90 seconds was constructed first. This is the heart of "Dolce Vita". It seemed only fitting that the restaurant building was then designed and built by Jim and his family literally around the oven. Beautiful wood beams and cathedral ceilings provide a unique dining experience. Outdoor seating is also available during season. As you step from your car or your family approaches on the bike trail from Decorah, the enticing scent of Jim's



Restaurant and Bakery owners Brenda and Jim McCaffrey proudly showcase their wood-fired brick oven.

wood fired oven will excite your taste buds and give assurance that you are in for a treat at McCaffrey's.

The family specializes in wood-fired pizza, gourmet sandwiches, exquisite appetizers and a full wine and beer list. Homemade cheesecakes are available for dessert. Everything is made from scratch and many of the items are purchased fresh from local farmers and vendors. Even the flour used for the dough and baked goods is organic from a local vendor.

And if you haven't brushed up on your Italian lately.....Dolce Vita means "the sweet life." Buon appetito!

Wood -fired Pizza, Breads and International Cuisine

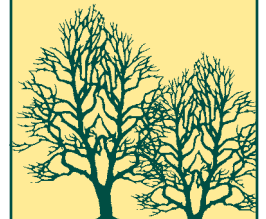
**2149 Twin Springs Road
Decorah, Iowa • (563) 382-4723**

**Opens at 4 pm Wed-Friday
and 11 am on Sat. & Sun.**

By Meagan Moellers

Important Notice

Dairyland Power Cooperative will be treating and removing brush and trees under and adjacent to the electrical transmission line that is located on and across your property during the next several months. All members should have received a card explaining the procedures.



Inside this issue...

PAGE 2	Shared Management
PAGE 3	Storm Safety
PAGE 4	Stimulus Package
PAGE 5	Youth and the REC
PAGE 6	Fair Contests Grain Bin Safety
PAGE 7	Ice Cream Recipe
PAGE 8	Dates to Remember Touchstone Energy

Shared Management – Shared Savings

If you look at the seven cooperative principles, rule number six is “cooperation among cooperatives.” This certainly has been the case over the history of our electric cooperative in that when disaster strikes or emergencies arise, our neighboring cooperatives are there to lend a helping hand.

I’m pleased to report that for the past ten years your electric cooperative has accelerated this rule and further investigated this model in our daily operating practice. The end result has been operating savings and the ability to attain resources that our cooperative alone could not provide or afford.

In partnership with our three neighboring electric cooperatives, we have formed our own engineering firm – PowerPlus Engineering – to perform engineering services for Tri-County Electric Cooperative of Rushford, Minn., Allamakee-Clayton Electric Cooperative of Postville, Heartland Power Cooperative of St. Ansgar and Hawkeye. We have creatively called our cooperative partnership MINNOWA, to reflect that three of these electric cooperatives are located in Iowa and one in Minnesota.

In addition to our engineering support, our MINNOWA group coordinates our vegetation management programs. We have also coordinated our resources for a shared safety and compliance director. In addition to these shared employees we also coordinate purchasing, financial audit bids, and certain inventory of distribution line equipment we all utilize.

The end result of this cooperation has been quality services and programs at a cost savings to the cooperative, and ultimately its membership.

On May 22nd, the Board of Directors of Tri-County Electric Cooperative and Hawkeye REC met together in Cresco to discuss another sharing opportunity, a cooperative manager to manage both cooperatives.

For the past three months, on an interim basis, I have had the opportunity to serve as manager of both Tri-County Electric Cooperative and Hawkeye REC and found the arrangement to work very well. With today’s technology I can just about be in two places at one time. However, I mainly attribute the success of shared management to the quality employees at each electric cooperative.

As the rising cost of electricity continues to concern our cooperatives’ leadership, the two cooperative boards felt that a shared management arrangement warranted further consideration, they unanimously supported a one-year agreement, with expectations for extensions. They agreed upon shared costs on a 50/50 basis which provides a direct savings to both cooperative organizations.

I will have the privilege to represent both cooperatives at meetings and cooperative events. This also provides added savings for travel and meeting expenses.

In Minnesota, a few other electric cooperatives are currently sharing a manager and the arrangement has



Brian Krambeer
CEO

(563) 547-3801 • (800) 658-2243
bkrambeer@tec.coop

worked well for a number of years. It’s important to note, that this arrangement is in no way associated with a merger or consolidation. Yet, with shared resources, much of the savings of a merger can be attained without merging. Cooperatives can still retain their local presence and personal identity that I believe will be very important to our membership in our ever-changing electric industry.

In conclusion, I applaud the cooperation exhibited by both electric cooperative board of directors and I look forward to continuing the opportunity to work with the staff and membership of both fine electric cooperatives.

As always, I welcome your calls, e-mails and personal visits.

When Thunder Roars, Go Indoors

National Lightning Safety Awareness Week

June 21-27

Summer is often a peak season for one of the nation's deadliest weather phenomena—lightning. Lightning strikes year round. According to the National Weather Service, an average 62 people are killed each year by lightning in the United States. In 2008 there were 329 people struck in the USA, with 302 injured and 27 killed. Given these statistics, it's extremely important to take lightning seriously and to stay educated on lightning safety.

As part of its Teach Learn Care TLC campaign, Safe Electricity urges parents and other caregivers to make sure children also understand the importance of lightning awareness and how to stay safe.

Don't be fooled by blue skies. If you hear thunder, lightning is close enough to pose an immediate threat. That is why the National Weather Service has adopted the saying: When Thunder Roars, Go Indoors!

Lightning can strike up to ten miles from the area in which it is raining, even if you don't see clouds. This means that if you can hear thunder, you're within striking distance. A good idea is to use the '30-30 Rule.' According to this rule, if you count less than 30 seconds between a lightning flash and the thunder following it, you should seek shelter from the storm. A smart thing to do is count your 30 seconds inside away from all threatening weather. When the storm is over, wait thirty minutes after the last lightning strike you see before going back outside.

If caught outdoors during a thunderstorm and unable to take shelter in a building, take the following precautions:

- Try to take shelter in a vehicle with a solid metal roof. Close the windows and avoid contact with electrical conducting paths, such as the steering wheel, ignition, gear shifter, or radio.
- Avoid water, high ground, or open spaces.
- Do not seek shelter under tall, solitary trees; canopies; small picnic or rain shelters; or in any open-frame vehicles such as jeeps, convertibles, golf carts, tractors or mowers.
- Do not stand near power, light or flag poles, machinery, fences, gates, metal bleachers, or even other people. If you are in a group, spread out so that you are at least twenty feet apart.



- If your skin tingles or your hair stands on end, lightning may be about to strike. Squat down low to the ground with your head between your knees making yourself the smallest target possible.
- Phone use is the leading cause of indoor lightning injuries in the U.S. A direct strike is not necessary for lightning voltage to enter your home through phone lines, electrical wires, cables and plumbing

If a person is struck by lightning, call 911 and care for the victim immediately. You are not in danger of being electrocuted by the victim.

“Teach Learn Care” TLC is a public service campaign of Safe Electricity, an electrical public awareness program supported by a coalition of hundreds of organizations, including electric utilities, educators, and others committed to promoting electrical safety. For more information on electrical safety, visit www.SafeElectricity.org.

Hawkeye receives 95% on safety inspection!

Your cooperative recently scored 95% on the Rural Electric Safety Accreditation Program. The goals of the Safety Accreditation Program are to preserve life and to prevent injuries, to establish a safety and loss control standards, to recognize the employees of Hawkeye REC who work everyday to maintain a safe work environment, and to compliment Hawkeye's mission of providing safe and reliable electrical service to you, the member-owners. The program also helps ensure that vehicles and work equipment are properly maintained and that Hawkeye's work policies and procedures are in accordance with rural electrification standards.



Energy Efficiency

Tip of the Month

What can the stimulus package do for you?

It's all over the news; with the passage of the federal stimulus bill there's money available to help many Americans weatherize homes and make energy efficiency improvements. But how can residents in our area connect with these resources? Hawkeye is ready to help as the American Recovery and Reinvestment Act of 2009 goes into effect.

"The state of our economy has left many Hawkeye members searching for ways to make ends meet," explains Brian Krambeer, President/CEO of Hawkeye. "Making the most of each energy dollar is high on everyone's list of concerns. We're ready to help explain which parts of the stimulus bill may affect you, especially if you're considering energy efficiency improvements."

Investing in a few basic measures to secure a home from outside elements could provide major benefits. The U.S. Department of Energy (DOE) says weatherization—the process of sealing air leaks and properly insulating a home—can reduce heating bills by up to 32 percent, resulting in an average energy savings of \$358 per year.

"You can be more comfortable, and save on your energy bill while improving the environment," adds Krambeer. "Making our nation more energy efficient takes all of us doing our part, and the stimulus bill provides new ways for you to save money while you're doing it."

As a result of the stimulus package, DOE's Weatherization Assistance Program is expanding with a goal of weatherizing one million homes per year. In the past, only households that earned up to 150 percent of the national poverty level were eligible to participate. The stimulus bill extends eligibility to those with incomes below 200 percent of the national poverty level. For a family of four, that's an income limit of \$44,100.

Program participants receive a professional energy consultation with an analysis of energy bills, a blower-door test to locate air leaks and advice on how to be more efficient. Workers then arrive to make energy upgrades like insulating walls and roofs, sealing air leaks, and installing more efficient heating and cooling systems. The process to weatherize a home through the program usually takes two days with an average cost of \$2,500. Since some homes have different needs, the stimulus bill allows up to \$6,500 to be spent on each home.

For members not eligible for federally funded programs, the stimulus plan provides a homeowner efficiency tax credit of up to \$1,500, or 30 percent, of the cost for new energy upgrades, including weatherization activities as well as installation of efficient heating, ventilation, and air conditioning

systems. Efficiency tax credits were already available for 2009, but carried a \$500 limit (with additional caps for certain types of upgrades) and only covered up to 10 percent of a member's investment.

"You may have looked at the tax credit in the past and thought it wasn't worth it," notes Krambeer. "This change effectively triples the amount of financial investment you get credit for, and, coupled with how much you can save on energy costs each year, it makes these efficiency measures much more affordable."

Tax credits directly lower a member's federal income taxes, and are generally more valuable than tax deductions because they reduce taxes owed dollar-for-dollar. In contrast, a tax deduction, like a home mortgage or charitable gift, lowers taxable income and may only offer small savings. For example, a \$1,500 tax deduction for someone in the 25 percent tax bracket would lower taxes owed by \$350; a \$1,500 tax credit for energy efficiency efforts will lower taxes owed by \$1,500!



To find agencies administering the Weatherization Assistance Program in your service area, visit:

www.waptac.org/sp.asp?mc=what_contacts

Members who want to apply for the program should visit:

www.eere.energy.gov/weatherization/state_contacts.cfm

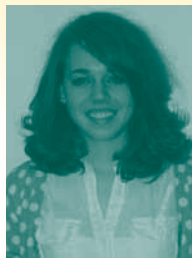
SUMMER Help



Jake Hagen is working in the billing department this summer. This is his second year at Hawkeye. He will be a junior at Luther College and is majoring in Bio/Pre-chiropractic program. Jake is the son of Rick and Sandy Hagen of Cresco.



Craig Ohloff is working with the linecrew this summer. This is his first year at Hawkeye. Craig will be attending the Powerline Technology Program at Northwest Iowa Community College in Sheldon this fall. Craig is the son of Marlyn and Deb Ohloff of Cresco and Joni Ohloff of Hammond, Wis.



Amanda Riha is working in the billing department again this summer. This is her fourth year at Hawkeye. She will be a junior at Iowa State University majoring in Interior Design. She is the daughter of Pat and Ruth Riha of Cresco.



Erica Riha is working in the billing department. This is her second year at Hawkeye. She will be a sophomore at Iowa State University majoring in Design. She is the daughter of Pat and Ruth Riha of Cresco.



Casey Stika will be working with the linecrew this summer. This is his second year at Hawkeye. He will be attending the Powerline Technology Program at Northwest Iowa Community College in Sheldon this fall. Casey is the son of Dennis and Carol Stika of Cresco.

Scholarship Winners

Jena Flak

Parents: Dale & Cathy Flak

High School: Decorah

Activities: FFA, Community Club, NHS, Relay for Life, Choir, Orchestra (Chamber, NEIC & Dorian), Religious Education Teacher, Riding & Showing Horse, Reading and learning about people and their cultures.

Future Plans: University of Iowa

Major: Anthropology



Joshua Woodhouse

Parents: Paul & Darlene Woodhouse

High School: Decorah

Activities: Football, Basketball, Soccer, Baseball, D-Club, St. Benedict's Youth Group, Volunteer Flag Football Coach, National Honor Society and School Variety Show

Future Plans: University of Northern Iowa

Major: Exercise Science or Pre-Med



Ryan Kurash

Parents: Steve & Marianne Kurash

High School: New Hampton

Activities: PSEO Classes, Guitar, Basketball, Band, 9-11 Service Days, Crop Walk, Holy Family Fall Festival, Nursing Home Visits, Ready Set Grow Programs, Sand Bagging, Soup Dinners, Coats for Families, S.A.D.D. Member and Character Counts

Future Plans: Wartburg College

Major: Computer Science
The power of human connections



Emily Bakula

Parents: John & Nancy Bakula

High School: Turkey Valley

Activities: Volleyball, Basketball, Band, National Honor Society, Writer's Club, Tutoring, Teaching Spanish to Elementary, Foreign Language, Church Involvement, Locks of Love and Heart Awareness Service Project

Future Plans: NICC then Wartburg

Major: Education (elementary or secondary)



Casey Stika

Parents: Dennis & Carol Stika

High School: Crestwood

Activities: Football, Basketball, Track, Honor Roll, 4-H involvement at both local and state levels, Church Involvement, Flood Recovery Efforts and Assistance with Auction Company

Future Plans: Northwest Iowa Community College

Major: Power Lineman Technology Program



Hawkeye sponsored events

It's County Fair Time!

Howard County Fair is June 24-28

Strawberry Dessert Contest

Judging at 3:30 pm on Wed. 6/24

Homemade Apple Pie Contest

Judging at 2:30 pm on Wed. 6/24

Light Bulb Decorating Contest

- Open to all 12 years of age and under
- Each child entering will receive a new CFL light bulb
- Fairgoers will vote for their favorite entry and winners announced Sunday

Prizes:

1st Place - \$25 cash 2nd Place - \$15 cash 3rd Place - \$10 cash

All entries accepted from 10 a.m. – 2 p.m. on Wednesday 6/24



Hawkeye employees are also sponsoring the MooMobile on Wednesday, June 24th. Stop by and enjoy a delicious malt.

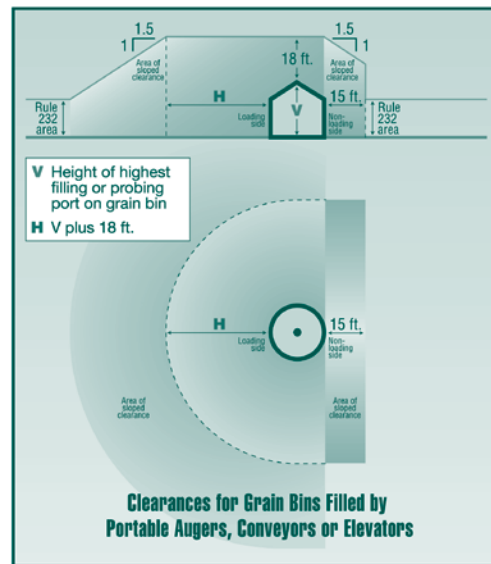
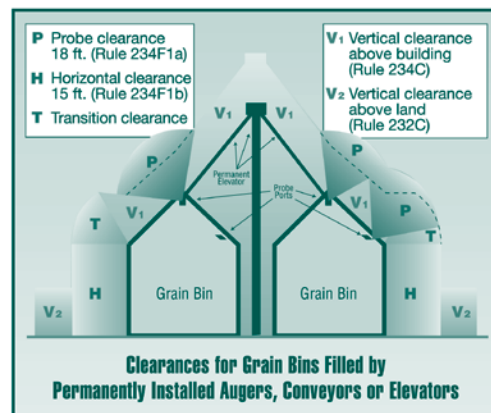
Grain Bin Safety

When you start to plan for a new grain bin, please contact your electric cooperative. Hawkeye REC will provide assistance in planning for a safe environment for everyone working and living around grain bins. The State of Iowa requires specific clearances for electric lines around grain bins, with different standards for those filled by portable and permanent augers, conveyors and elevators.

According to the Iowa Electric Safety Code found in Iowa Administrative Code Chapter 199 — 25.2(3) b. *An electric utility may refuse to provide electric service to any grain bin built near an existing electric line which does not provide the clearances required by The American National Standards Institute (ANSI)C2-2007, page 120. "National Electrical Safety Code," Rule 234f. This paragraph "b" shall apply only to grain bins loaded by portable augers, conveyors or elevators and built after September 9, 1992, or to grain bins loaded by permanently installed augers, conveyors or elevators built after December 24, 1997. (As adopted by the Iowa Utilities Board)*

Hawkeye is required by the Iowa Utilities Board to provide this annual notice to farmers, farm lenders, grain bin merchants, and city and county zoning officials. If you have any questions concerning clearance regulations, please call Hawkeye's Operations Department at 563-547-3801.

Drawing reprinted with permission from IEEE Std. C2-2007, "National Electrical Safety Code." © Copyright 2007 by IEEE: reserved. The IEEE disclaims any responsibility or liability resulting from the placement and use in the described manner.



Recipes...

Enjoy Dairy Month with Ice Cream.



Send or e-mail your favorite recipe. If we print your recipe in our newsletter you'll receive \$5 off your next electric bill. E-mail to: mmoellers@hawkeyerec.com



July – Chicken Recipes (need by June 15)

August – Economical Dishes (ways to stretch a meal.) (need by July 15)

All recipes can be found on our website.

Chocolate Freeze

Line a 9 x 13 in. cake pan with crushed graham crackers or vanilla wafers. Cover crust with one quart or more vanilla ice cream. (I find it easier to slice a half-gallon brick of ice cream and layer it on.) Cover with the following chocolate batter:

Melt ½ C. butter or oleo and 3 squares unsweetened chocolate. Add 3 beaten egg yolks. Add 2 C. powdered sugar. Beat 3 egg whites and fold in. Whip 1 C. whipping cream and mix in. After pouring this on the ice cream, cover with crushed nut meats or graham cracker crumbs. Freeze until ready to serve.

Ruth Jauert – Decorah

Ice Cream Chocolate Dessert

½ gallon ice cream (vanilla)
1 c. graham cracker crumbs
(½ over bottom of pan, save other ½ for top of ice cream)
3 squares semi-sweet chocolate
½ c. oleo or butter
2 c. powdered sugar
3 eggs (well beater)
½ c. nuts (black walnuts)

Melt 3 squares semi-sweet chocolate with ½ c. oleo or butter in heavy saucepan over low heat, add it to 2 c. powdered sugar, 3 well beaten eggs, ½ c. nuts. Bring all to a boil and take off heat. Pour into cake pan over ½ graham cracker crumbs. Chill in freezer. In 1 hour, add softened ice cream, then other ½ of crumbs and put back in freezer.

Morgan Marlow – Decorah

Fudge Nut Freeze

Crust:	Filling:
¾ c. margarine (melted)	12 oz. cool whip
1 ½ c. flour	1 ½ qt. vanilla ice cream
¼ c. & 2 T. Nestle's Quick	¼ c. & 2 T. Nestle's Quick
¼ c. & 2 T. sugar	
¾ c. peanuts (chopped)	

Combine flour, Nestle's Quick and sugar with melted margarine. "Stirring constantly", cook over medium heat for 3-5 minutes or until mixture is crumbly. Refrigerate until cool, add peanuts. Reserve ½ crumbs. Spread remaining crumbs in a 9 X 13 pan. Make filling. Mix cool whip, Nestle's Quick and ice cream. Sprinkle reserve crumbs on top. Freeze for bars.

Rita McConnell – Decorah

Moms Special Banana Split Dessert

Crust:	Sauce:
½ c. sweet cream butter	2 c. powdered sugar
2 c. graham cracker crumbs	½ c. sweet cream butter
¼ c. sugar	13 oz. can evaporated milk
Filling:	6 oz. pkg. chocolate chips
3 bananas sliced ¼"	1 t. vanilla
½ gallon vanilla ice cream (slightly softened)	Topping:
1 c. chopped walnuts	1 c. whipping cream
	Cherries if desired

Melt ½ c. butter, stir in crumbs and sugar. Press in 9 X 13 pan. Layer banana slices over crumbs and spread ice cream over bananas. Sprinkle with nuts. Cover, freeze until firm (about 4 hours). Meanwhile, combine all the sauce ingredients and cook until thickened for about 20-25 minutes and comes to boil. Boil for 1 minute. Cool completely, pour over ice cream. Cover and freeze firm (3 hours) in chilled bowl. Whip cream to soft peaks and spread over sauce. Garnish with cherries if used. Serve immediately or freeze until served.

Janice Dougherty – Waukon

Banana Split Dessert

Graham cracker crust:
4-5 bananas
½ gallon Neapolitan ice cream (slightly softened to spread)
Walnuts
1 c. chocolate chips
½ c. butter or margarine
½ c. evaporated milk
2 c. powdered sugar
1 t. vanilla
1 pint cool whip

Place graham cracker crust in a 9 X 13 pan. Reserve some for top. Slice bananas on top of crust. Put ice cream on top of that and spread. Sprinkle nuts on ice cream. Place in freezer until firm. Next, melt chocolate chips in butter, add evaporated milk, sugar; cook until thick. Add vanilla. Cool. Spread over ice cream and nuts. Place in freezer until firm. Put cool whip on top and sprinkle on the rest of the graham cracker crumbs. Freeze.

Hawkeye REC News

PO Box 90 - Cresco, Iowa 52136
1-800-658-2243 or 547-3801
www.hawkeyerec.coop

OFFICE HOURS

Monday thru Friday • 7:30 a.m. - 4:00 p.m.
(Closed Sat., Sun., & Holidays)

OUTAGES

1-800-927-5265

**IOWA STATE ONE CALL
1-800-292-8989**

BOARD OF DIRECTORS

Dean Fisher, President - Lawler
Charles Frana, Vice President - Calmar
Dennis Ptacek, Secretary/Treasurer - Elma
Norman Dickman - Decorah
John Hockspeier - Alta Vista
Janelle Mahr - Lime Springs
Roger Nibaur - Elma
Dean Nierling - Burr Oak
Dennis Young - Decorah

PERSONNEL

Brian Krambeer, Chief Executive Officer
Mike Walton, Operations Manager
Jim Murphy, Information Tech. Manager
Cindy Christensen, Communications Manager
Peggy Berg, Chief Financial Officer
Pat Boyle, Business Dev./Mbr. Serv. Manager

EDITOR

Meagan Moellers

Hawkeye REC
PO Box 90
Cresco, Iowa 52136

PRSR STD
U.S. Postage
PAID
DPC

DATES TO REMEMBER

BILLING CYCLE DATES

- June 10 Hawkeye REC prints bills based on May meter reading.
- June 11 Bills are mailed to members from NISC in St. Louis.
- June 25 Member reads meter and records on payment voucher. Please mail your bill today to make sure it is received by July 1.
- June 23 Disconnect services for non-payment.
- June 29 Automated payments from checking accounts and credit/debit cards are processed.
- June 30 AMR meters are read by the cooperative.
- July 1 Bills become delinquent.

OTHER EVENTS

- June 29 Hawkeye REC Board Meeting
- July 3 Office Closed – Independence Day Observation

COMMUNITY EVENTS

- June 12-13 Heartland Days – New Hampton
- June 12-14 Old Settler's Days – Chester
- June 14 Castalia Tractor Days – Castalia
- June 20-21 Big Four Fair – Postville
- June 24-28 Howard County Fair – Cresco
- June 27-28 Laura Ingalls Wilder Days – Burr Oak



Father's Day is June 21
Play it safe dad!

At Hawkeye REC, our members mean the world to us. That's why their safety, above all else, comes first. It's why our power lines are placed as high as they are. To ensure they stay out of your way. The bottom line—don't ever go near power lines.

Hawkeye REC
The Power Is Yours

Looking out for you.