



**In This Issue...**

<b>PAGE 2</b> Manager's Message	<b>PAGES 4-5</b> History Article	<b>PAGE 8</b> Dates to Remember "Together We Save" Series
<b>PAGE 3</b> Monthly Board Report Outage Report Load Management Test Turkey Trot Grassroots Outreach	<b>PAGE 6</b> Legislative News - Air Pollution Rule	
	<b>PAGE 7</b> Recipes Heartland Security Energy Efficiency Tip	



## Invite Safety Home for the Holidays

It's easy to get caught up in the hectic pace of holiday entertaining—cookies to bake, decorations to hang, presents to wrap. But don't overlook safety during the rush. The winter holiday period marks peak time for home fires and preventable injuries.

The good news is that it's not difficult to make your home ready to safely host all of your favorite holiday activities.

First, take time out from your party preparations to test your smoke and carbon monoxide alarms. Smoke and carbon monoxide alarms should be installed on every level of the home and outside each sleeping area. Smoke alarms should also be located inside each bedroom. Be sure

to share your family fire escape plan with any overnight guests.

Arrange your holiday decorations to avoid overloading electrical outlets with too many lights, cords, or appliances. Inspect all decorations, cords, and outlets for damage before use. Keep electrical cords out of doorways and high traffic areas where they pose a tripping hazard. Do not damage cords by pinching them or attaching them with staples or nails.

"Keep young visitors safe by preparing your home before they arrive. If your home is not already "child proof," install tamper resistant receptacles or use safety covers on all unused electrical outlets. Store breakables, candles, matches, and other potentially dangerous items in inaccessible or locked areas. Don't forget to put away small items like buttons, coins, and jewelry, which are a choking hazard. Use safety gates at the top and bottom of stairways to keep babies and toddlers safe."

Safety doesn't stop when the party starts. Keep decorations, gifts, and other combustibles at least 3 feet from heat sources or open flame. Never leave the kitchen when something is cooking. Make sure children are supervised at all times in the kitchen and anywhere space heaters, candles, or fireplaces are being used. Turn off and unplug all decorations before leaving home or turning in for the night.



*In the midst of cookie-baking and holiday preparations, take time to ensure your home is safe for visitors.  
Source: Whirlpool Corporation*

Remember that a safe and happy holiday remains the best gift you can give friends and family.

*Source: Electrical Safety Foundation International*

*Blessings for a Bountiful Thanksgiving... spent with family & friends*

*from the staff and directors at Hawkeye REC*

*Office will be Closed on Thursday, November 24 Friday, November 25*

**LED lights may save you energy and money, but they are also much safer! As you start thinking about decorating your house and lawn after Thanksgiving, also start thinking about purchasing new LED light strings to replace your traditional holiday lights. Submit the rebate form to Hawkeye by January 3 and get \$2 per string (limit 12 per account). You must also attach a copy of the sales receipt. Go to [www.hawkeyerec.coop/Rebates/2011RebateForms.pdf](http://www.hawkeyerec.coop/Rebates/2011RebateForms.pdf). (The form is on page 4 of the pdf in an orange box.)**

# “Jobs, Jobs, Jobs”

**H**ow often have you heard this statement in the last six months? You’ve most likely heard it quite often, from President Obama in promoting his Jobs Bill or from one of the many Republican debates going on across the country. What you may not know is that your electric cooperative has consistently been working with our local communities, counties and other community organizations to support new business and jobs in Northeast Iowa.

**“Hawkeye’s economic development efforts in the last ten years have amounted to over 40 percent of our kWh sales on a monthly basis.”**

Hawkeye REC has been very progressive in writing grants through the USDA Rural Development. Over the past ten years, through providing assistance to a dozen businesses in Northeast Iowa, we have obtained over \$2.3 million from the USDA Rural Development. These resources have become the foundation of Hawkeye’s current Economic Development Revolving Loan Fund (RLF) of \$2,325,275.

The REDLG (Rural Economic Development Loan & Grant) funds were very difficult to obtain. Applications for these resources went through a national competitive scoring process based on the number of jobs created and the impact on the community. Grantee’s had to be non-profit, educational or health care related to qualify to receive the initial funding. The REDLG grant was a loan for ten years, at zero percent interest, with a two year deferral. Once the

grantee started paying back the loan funds, they could then be placed into the Hawkeye REC Revolving Loan Fund – rather than being paid back to the federal government.

Through the revolving loan process of re-loaning these initial funds, we have currently loaned out over \$4 million, which is directly attributed to the creation of 300 new jobs and the retention of over 650 jobs in Northeast Iowa. The program has assisted in bringing critical services to the area; hospital and health care expansions, education facilities, daycare facilities, wellness centers and assisted living facilities. These critical infrastructure facilities have been identified by USDA to be core community foundation builders and a necessity for a community’s future sustainability.

Access to federal grant money will become more difficult to come by in the future because of obvious budget cuts. Yet, through the use of the Hawkeye REC Revolving Loan Fund, your cooperative will continue to be financially positioned to provide future assistance for economic growth to both existing businesses that are expanding and new businesses looking to relocate to Northeast Iowa.

Hawkeye was also one of the driving forces of putting together the business plan and raising equity from the community to build Homeland Energy Solutions. Homeland has become a significant manufacturer for Northeast Iowa by creating 42 jobs, providing an outlet for area grain farmers and a significant increase in the tax base for Chickasaw County. In addition to the 42 jobs there have been a number of other spin-off jobs created associated with the day-to-day transportation needs to operate the plant.

Hawkeye’s economic development efforts in the last ten years have amounted

to over 40 percent of our kWh sales on a monthly basis. Which as you can imagine has been very beneficial to spread fixed costs to operate the cooperative over a greater base.

Our cooperative’s economic development efforts are truly attributed to your Board of Directors support for rural development and the responsibility of Hawkeye REC’s Coordinator of Community and Business Development - Pat Boyle.

Hawkeye has also been very active in our commitment to the community by its assistance in affordable housing and working with the Northeast Iowa Community Action and Upper Explorerland organizations. Your cooperative also supports local community Economic Development Authorities and community development organizations such as CEDA (Community and Economic Development Specialists). CEDA is celebrating 25 years of success in helping local communities and counties in their economic development needs. In 2010 CEDA, a private nonprofit 501c3 organization established to assist communities in their economic, social and ecological wellbeing, took over the leadership of the Howard County Economic Development Authority and Cresco Chamber of Commerce.

So the next time you hear the “jobs” discussion, you will also know your electric cooperative is working to help support our existing businesses and in the recruitment of new businesses to Northeast Iowa.

As always, I welcome your calls, e-mails and personal visits.



**Brian Krambeer, CEO**  
(563) 547-3801 or (800) 658-2243  
bkrambeer@tec.coop



## BOARD *Report*

Hawkeye's Board of Directors conducted the monthly board meeting on October 28th.

### Highlights of the meeting:

- ▶ Reviewed Key Ratio Trend Analysis prepared by Cooperative Finance Corporation
- ▶ Approved Annual Meeting date of April 18, 2012, to be held at Crestwood High School
- ▶ Approved FEMA Grant Management Policy and Procedure Manual
- ▶ Reviewed and approved changes to the Cogeneration and Small Power Production Rate Tariff
- ▶ Discussed upcoming Grassroots Programs



## October Outage Report

- Planned – 5 (53 members)
- Weather – 5 (5 members)
- Other/Unknown – 17 (40 members)
- Power Supplier – 0
- Small Animals/Birds – 5 (5 members)
- Individuals - 26
- Affected Members – 103
- Total Outages – 32

**When the lights go out, so do we**

## Turkey River Turkey Trot Race

and Fun Walk • Sat. Nov. 12, 2011  
Prairie's Edge Nature Center  
11562 Valley Ave., Cresco, Iowa

Race begins at 9 a.m. The four mile run/walk is on a paved and scenic course. For registration forms and more information: [www.fitnesssports.com/races.nov](http://www.fitnesssports.com/races.nov)

This event is held to raise food and funds for the NorthEast Iowa Community Action Corp. – a non-profit organization that helps those less fortunate or those facing challenging times during the Holiday Season.



**TO BENEFIT NEICAC...**

**A Great Cause**

## Load Management Fall Testing

As cooler temperatures and fewer daylight hours arrive with autumn, the energy professionals at Hawkeye REC are preparing for another Midwest winter. This includes a test of Hawkeye's load management system. This test is conducted each fall to assist the cooperatives in determining if problems exist with their interruptible heating loads and remind members that loads will be controlled during the peak of the heating season.

**Wednesday, Nov. 16**  
Tests begin at 5 p.m.

If you currently participate in a residential dual fuel or heating load management program, the system will be tested on Wednesday, November 16, beginning with an alert at 4:50 p.m. This means that controlled electric heating tests will begin at 5 p.m. and continue throughout the evening. During the control period, customers will rely on their backup heating system. All electric heating systems will be restored by 10:30 p.m.

Please contact Hawkeye REC with any questions or concerns about the load management test.

## Grassroots Member-Outreach Program **NEW!**

**W**e keep a watchful eye on proposed legislative policy that may impact our ability to deliver safe, affordable, reliable electricity in an environmentally responsible manner to our members. But there's never been a better time for our members to get involved too! Here's how:

### email

[Join Email List](#)

Sign up to be included in email communications so you are armed with the facts that matter to Iowans. Sign up via email to [mmoellers@hawkeyerec.com](mailto:mmoellers@hawkeyerec.com) and provide your email address. You can also visit our website at [www.hawkeyerec.coop/News/LegislativeNews](http://www.hawkeyerec.coop/News/LegislativeNews) and click on the 'Join Email List' to be added automatically.

### twitter

Go to [www.twitter.com/HawkeyeREC](http://www.twitter.com/HawkeyeREC) and start 'following' Hawkeye. We urge our members to stay connected in 'real time' with legislative issues affecting the co-op which in turn affect you as a member. (Not only will you receive regular updates on the grassroots front, but we'll also provide safety and outage updates, event announcements and tips to help you save energy and money.)



### newsletter

Look for periodic articles in the *REC News* monthly publication.



### websites

- [www.hawkeyerec.coop](http://www.hawkeyerec.coop)  
Go to News/Legislative News
- [www.iaruralpower.org](http://www.iaruralpower.org)
- [www.ourenergy.coop](http://www.ourenergy.coop)  
Our Energy, Our Future



**We want you to be involved!**



## Discovering Family Ties with the REA

*The following recollections are from Julie Ann Lickteig and David Leo Lickteig, children of Theodore (Ted) and Helen Lickteig (both deceased).*

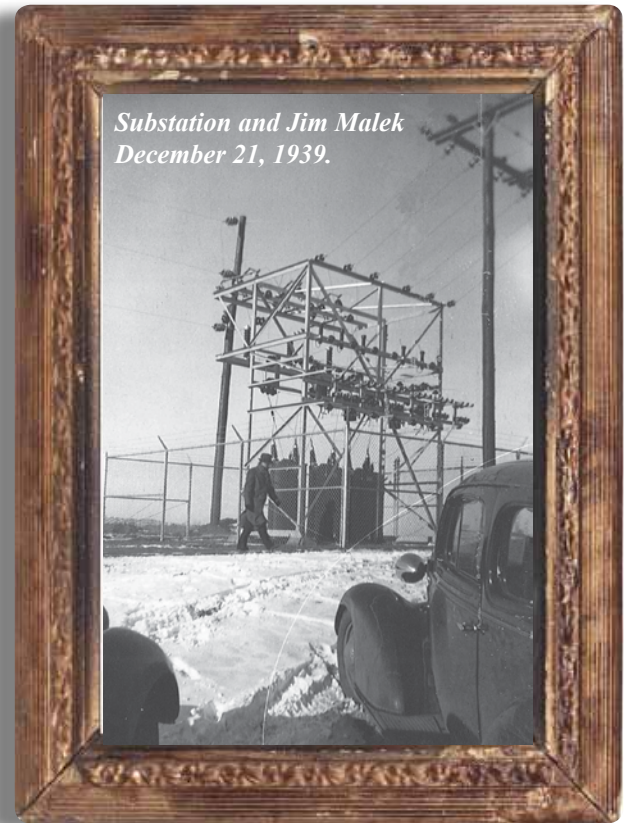
### "Do You Remember When?"

A series of articles capturing memories and photos of the beginning of your electric cooperative.

This article was written in November 2009.

By: Meagan Moellers

The Lickteig family had several direct ties with the birth of the Hawkeye Tri-County Electric Cooperative. Theodore and Helen Lickteig moved to their farm in the spring of 1939 near the intersection of State Highways 9 and 139 in Cresco. Shortly after that, the REA substation was built right across the road from their farm and after patiently waiting for electric service, they were accepted as new members on August 3, 1945. Ted Lickteig's father, Peter H. Lickteig, served on the Board of Directors from 1939-1941 and relative Ed Blazek from Lawler served as a director from 1950-1955.



*Substation and Jim Malek  
December 21, 1939.*

**The following excerpt was taken from Ted Lickteig's personal journal:**

*"On December 7, 1941, the Japanese attacked Pearl Harbor, and President Roosevelt declared a state of war. Rationing of food items and materials essential for the war was started. Stamps and tokens were issued by quota for purchasing rationed items such as sugar, gas, tires, and steel-made items. Electric power on farms from REA was a source of help. Not having it (power), we applied for a permit to purchase the much rationed copper wire. Had wiring in house and farm buildings installed to a minimum of requirements. Can add (on) later. What a relief! No more milking and choring by kerosene lantern lights after a long day's work in the field."*

Julie Ann remembers coming home from early grade school years and being asked to do her homework immediately with daylight. There was a belief that the kerosene lantern light was a bit harmful to one's eyesight. By the time she was in second grade, her family had power! "Whenever the power went out due to storms," Julie Ann recalls "our family could actually hear conversations of the repairmen at the substation from our upstairs windows. We could witness the progress and sometimes learn the estimated time of restoration which we could then pass along to parties that called us."

**Ted utilized the power he mentions in his journal until he passed away in 2004, just short of age 96, still on his beloved farm.**



Photos taken at Hawkeye's substation dedication on December 21, 1939. (L to R) Reed, Eckles, Wittenbreer, Chapman, Fellows, Vrba, Ringoen, Larsen and Malek.

David Leo and Julie Ann also reminisce about their favorite memories involving the Ed Blazek family from Lawler. Ed served as a Hawkeye REA Director in the 1950's. Mrs. Ed Blazek (Eleonora) and Mrs. Ted Lickteig (Helen) were cousins and childhood friends. Eleonora would bring the three boys (Bill, Bob and Dick) to play with David Leo at the Lickteig farm while Ed attended the Board meetings. The mothers enjoyed a chance to visit together. Being the oldest, Julie Ann was asked to watch over the four boys, all under the age of ten. What great times they had, bringing out every conceivable toy from the tool shed. Bob remembers it as a fun time, while Julie Ann remembers putting away all the toys at the end of the day.



*“What great times they had, bringing out every conceivable toy from the tool shed.”*



### The role of a Cooperative Director

The Board of Directors play an important part in the cooperative business. Since its inception in 1936, over 57 members have actively participated as a director with years of service totaling over 659 years. That's an impressive amount of dedication to the cooperative from the nine-member Board. Today, each director serves a three-year term, but it wasn't unusual for members to only run for one or two year terms before the current by-laws require the three-year term period. There are four directors elected by the membership in Winneshiek County, three directors from Howard County and two directors from Chickasaw County.

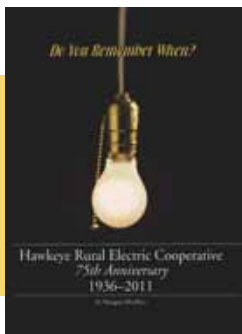
The Second Cooperative Principle is “Democratic Member Control” stating that cooperatives are democratic organizations controlled by their members, who actively participate in setting policies and making decisions. It is the duty of the Board to maintain complete loyalty to the cooperative, actively support its objectives and programs and make sound financial decisions.

Bob Blazek, son of Ed Blazek (director from 1950-1955) recalls young memories of his father and the REA.

*“I remember when my parents (Ed and Eleonora) went to a REA Convention in Atlantic City and then to Washington, D.C., in 1955. Another time Ed visited the Fort Randall Dam on the Missouri River in South Dakota, and later he visited an REA Project, the Ladysmith Dam in Wisconsin.*



*Ed Blazek in 1952*



**Have you enjoyed reading this series of history articles this year? Want to learn more about the early days of electricity? Stop by the office in Cresco to pick up your copy of “Do You Remember When?”, a 96-page hard cover book to highlight Hawkeye's 75th anniversary.**

# Cross State Air Pollution Rule (CSAPR)

EPA continues its series of regulations that affect electricity generation, with the Cross-State Air Pollution Rule (CSAPR) set to take effect Jan. 1, 2012. Under the rule, which was finalized in July and revised in October, power plants in 27 states, including Wisconsin, will be required to limit sulfur dioxide and nitrogen oxides emissions that affect air quality in other states.

CSAPR replaces the Clean Air Interstate Rule (CAIR), issued in 2005. CAIR was vacated by the United States Court of Appeals for the District of Columbia Circuit in 2008. The court instructed EPA to make revisions to CAIR and, until the revisions were made, the CAIR rules would temporarily stay in place.

During this time, Dairyland Power Cooperative (our power supplier), has made major reductions in emissions of sulfur dioxide, nitrogen oxides and particulate matter by investing in new air emission control equipment. For example, Dairyland installed fabric filter “baghouses,” designed to remove more than 99.5 percent of particulate matter from the exhaust gas stream, at Genoa Station #3 (G-3) and the John P. Madgett Station (JPM) in 2007. These baghouses remove 7,000 pounds per day more particulate matter compared to previous controls.

*Ever-changing rules are costly*



Dairyland is currently in the midst of a \$400 million air emission control plan at its electric generating facilities. When this plan is complete, Dairyland’s sulfur dioxide emissions will be reduced by over 90 percent. This will be in addition to the 80 percent reduction of sulfur dioxide emissions by Dairyland since the early 1970s. Nitrogen oxides emissions will be reduced by over 50 percent across the Dairyland system.

While I certainly embrace efforts to provide a cleaner environment, I am concerned about the overall trend of dramatically increased regulation by EPA and believe it’s important to make sure the rules proposed and enacted are reasonable measures that make sense for our members.

The new CSAPR is significantly more stringent than CAIR and allows very little time to comply. Beginning Jan. 1, 2012, CSAPR establishes emissions limits for each state and each electric generating unit (called allowances). The number of allowances provided for Dairyland’s power plants and most other affected utilities, is significantly less than needed to meet typical generation requirements.

I am very concerned that CSAPR will drive our energy costs up considerably. The air emission controls already installed at Dairyland’s plants are not enough to meet these new allowance limits. Additional air emission controls already planned by Dairyland can not be installed before the CSAPR limits are in effect. While excess allowances may be traded under the rule, there is some concern that there will not be enough allowances available.

Since it is impossible for Dairyland to install additional planned air emission controls by the 2012 start of CSAPR and allowance trading is questionable, Dairyland and other utilities may be required to reduce generation to comply with CSAPR. If we curtail production, it may require the purchase of power from a higher priced marketplace, which will likely increase our costs.

EPA claims that the Cross-State Air Pollution Rule will help avoid tens of thousands of premature deaths and illnesses, achieving billions of dollars in public health benefits. On a national level, EPA estimates the rule will cost \$800 million annually by 2014, on top of roughly \$1.6 billion per year in capital investments already underway as a result of the CAIR. The Brattle Group (Economic and Financial experts) estimates the rule could cost up to \$120 billion by 2015 and reduce the nation’s power supply by more than 55 gigawatts (almost 4 percent).

Hawkeye and Dairyland have made significant investment and effort to comply with environmental regulations. But, our co-ops have serious concerns about the cost to consumers that these recent regulations would impose.

Dairyland staff is working diligently with technical experts throughout the industry to find solutions that will minimize the impact on electricity prices for consumers. Dairyland is asking EPA and a court to stay the rule, make modifications to the rule and provide reasonable time to comply.

Hawkeye REC and Dairyland are committed to improving our environment. All we are asking for is sufficient time to make the required modifications at our power plants to meet the new rules, something which CSAPR does not provide us. We don’t think that is fair. Join with me in urging Congress to enact realistic and economically suitable energy policies that will benefit all Americans.

*Bill Berg*

**Bill Berg,  
President & CEO**

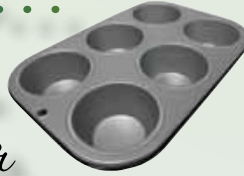
Dairyland Power Cooperative  
in LaCrosse, Wisconsin  
(Hawkeye’s Wholesale  
Power Supplier)





## Recipes...

Discover new ways to fill your muffin tins.



Send or e-mail your favorite recipe. If we print your recipe in our newsletter you'll receive \$5 off your next electric bill. E-mail to: [mmoellers@hawkeyerec.com](mailto:mmoellers@hawkeyerec.com)  
All recipes can be found on our website.

- Dec** - Hot Drinks (need by Nov. 15)
- Jan** - Deviled Egg Variations - Great for Superbowl parties (need by Dec. 15)
- Feb** - Recipes that use Oreo Cookies (need by Jan. 15)



75th Anniversary

### Cappuccino Muffins

**Mix:**

- 2 c. flour
- ¾ c. sugar
- 2½ t. baking powder
- ½ t. salt
- 1 t. cinnamon

**In another bowl, stir:**

- 2 T. instant coffee into 1 c. milk until dissolved.
- ½ c. butter (melted)
- 1 egg
- 1 t. vanilla

Mix well. Stir into the dry ingredients just until moistened. Fold in ¼ c. mini chocolate chips. Fill greased muffin tins 2/3 full. Bake at 375° for 18 to 20 minutes. Cool.



You can serve with the following coffee cream cheese spread.

**Cream Cheese Spread:**

- 8 oz. cream cheese (softened)
  - 2 T. sugar
  - 2 t. instant coffee
  - ½ t. vanilla
  - ½ c. mini chocolate chips
- Combine ingredients and beat well. Refrigerate. Cut muffins in half and spread generously with filling. Enjoy!!!

Nancy Dietzenbach – Decorah

### Heavenly Pecan Pie Muffins

- 1 c. light brown sugar (firmly packed)
- ½ c. all-purpose flour
- ½ c. chopped pecans
- 2 eggs (beaten)
- 2/3 c. butter (softened)

Preheat oven to 350°. Line muffin cups with paper muffin liners. In a bowl, stir together brown sugar, flour, and pecans. In separate bowl, beat eggs and butter together until smooth. Stir into dry ingredients until just combined. Spoon batter into muffin cups, about 2/3 full. Bake for 20 to 25 minutes. Cool on wire racks.

Carolyn Huber – New Hampton

**Learn how to protect your home from fire!**

Fire Prevention Lesson #1  
Where there is smoke, there is fire!

**Heartland Security**  
1-888-264-6380

The key to stopping a house fire is detecting it early. Where there is smoke, there is fire! Our smoke sensors will automatically notify the authorities if you aren't there. **Sign up for a new Heartland Security system by November 30 and receive a free smoke sensor.** Offer can't be combined with other specials. Call 1-888-264-6380 for more information or visit [www.heartlandss.com](http://www.heartlandss.com)

safe  
**HARVEST**

Use qualified electricians for work on drying equipment and other farm electrical systems.

**Energy Efficiency**  
*Tip of the Month*

Use motion sensors on your lights to save on your electric bill. These sensors turn on lights automatically when someone enters a room and turns them off after a person leaves.

Source: U.S. Department of Energy

24049 State Hwy 9 - Cresco, Iowa 52136  
 1-800-658-2243 or 547-3801

[www.hawkeyerec.coop](http://www.hawkeyerec.coop)

[www.twitter.com/HawkeyeREC](http://www.twitter.com/HawkeyeREC)

**OFFICE HOURS**

Monday thru Friday • 7:30 a.m. - 4:00 p.m.  
 (Closed Sat., Sun., & Holidays)

**Payment and billing inquiries  
 are available 24-7**

**OUTAGES**

**1-800-927-5265**

**IOWA STATE ONE CALL  
 1-800-292-8989**

**BOARD OF DIRECTORS**

- Dean Fisher, President - Lawler
- Charles Frana, Vice President - Calmar
- Dennis Ptacek, Secretary/Treasurer - Elma
- Norman Dickman - Decorah
- Roger Nibaur - Elma
- Dean Nierling - Burr Oak
- Dennis Young - Decorah
- Darla Rance - Lime Springs
- Carl Reicks - New Hampton

**PERSONNEL**

- Brian Krambeer, Chief Executive Officer
- Mike Walton, Operations Manager
- Peggy Berg, Chief Financial Officer
- Ted Kjos, Marketing & Mbr. Services Manager

**EDITOR**

Meagan Moellers

**Hawkeye REC**  
 PO Box 90  
 Cresco, Iowa 52136



**Dates to Remember**

**BILLING CYCLE DATES**

- Nov. 10 Hawkeye REC prints bills based on October meter reading.
- Nov. 11 Bills are mailed to members.
- Nov. 22 Disconnect services for non-payment.
- Nov. 25 Please mail your bill today to make sure it arrives to Hawkeye by the 1st of December. If needed, member reads meter and records on payment voucher.
- Nov. 28 Automated payments from checking accounts and credit/debit cards are processed.
- Nov. 30 AMR meters are read by the cooperative.
- Dec. 1 Bills become delinquent.

**OTHER EVENTS**

- Nov. 28 Hawkeye REC Board Meeting
- Nov. 24 **Office Closed for Thanksgiving Holiday** & 25
- Nov. 25 Holiday Parade – Cresco
- Dec. 2 Lighted Holiday Parade - Decorah

Caulking cracks and openings can save you \$212 a year. Find cracks by waiting for a windy day and then carefully holding a lit incense stick or a smoke pen next to your windows, doors, electrical outlets, and other spots where outside air may infiltrate. If the smoke stream moves horizontally, you've

found a leak that needs to be sealed.

Experts recommend using waterproof, flexible, and long-lasting silicone caulk to seal cracks and gaps that are less than one-quarter-inch wide. Remove any old caulk and clean the surface before applying new caulk.



I figured an afternoon of tracking down air leaks earned me a day out in the woods. Find out what you can do at [TogetherWeSave.com](http://TogetherWeSave.com).



**There's an app for that!**

[www.togetherwesave.com/Energy-Saving-App-Smartphones](http://www.togetherwesave.com/Energy-Saving-App-Smartphones)

Receive a "tip of the day" for your smartphone

- iPhone
- Droid
- Blackberry

[TOGETHERWESAVE.COM](http://TOGETHERWESAVE.COM)