

## Compact Fluorescent Lightbulbs lowered our bill!

Learn how they can save you money too...

**M**arvin and Ethel Haley of rural Riceville have replaced over 20 light bulbs in their home, as well as many outdoor fixtures. "We have noticed a significant difference in our electric bill after making the change," says Marvin. "It's wonderful! Some of our friends also changed their light bulbs to the new CFL's and their bill decreased as well." CFL's consume 66% less energy than incandescent bulbs, yet last up to 10 times longer. Turn to page 5 to see the cost difference.

Marvin and Ethel have been married for 61 years. They moved to their house by Riceville in 1955 and have been Hawkeye REC members since then.



The Haley's changed the light bulbs in this ceiling fan to CFL's.

Page 5 - Hawkeye's CFL light bulb sale.



"Change a light,  
Change the World..."  
Save Money.



**- Notice - Notice - Notice - Notice -**

### MEMBER APPRECIATION EVENT

Hawkeye will **NOT** be having the annual member appreciation event this year. The pole yard and truck storage area where the event is held is housing extra inventory of equipment and poles because of the winter ice storm. Thank you to all of our members for understanding this situation. We appreciate our members and look forward to holding this event again in the future.

**- Notice - Notice - Notice - Notice -**

Hawkeye REC Office  
Will Be Closed on  
Labor Day, Monday  
Sept. 3rd



Back to  
School

Inside this  
issue...

- PAGE 2-3**  
Renewable Energy
- PAGE 3**  
Outage Map
- PAGE 4**  
Ice Storm Projects  
Corn Maze  
Travel Opportunity
- PAGE 5**  
CFL Sale  
New Members  
Value of Electricity
- PAGE 6**  
Peak Alert  
New Employee  
Pie Contest Winners
- PAGE 7**  
Recipes
- PAGE 8**  
Dates to Remember  
Wait 'til Eight

# Renewable Energy Planning

**R**enewable energy generation is a priority for our wholesale power supplier, Dairyland Power Cooperative. Member interest, improving technologies and increasing regulatory requirements are some of the key drivers in the push to develop more renewable energy generation.

The challenge for Dairyland is to achieve renewable energy goals and requirements while looking out for the interests of all 25 of its member cooperatives in Wisconsin, Iowa, Minnesota and Illinois, including Hawkeye REC. Dairyland pursues opportunities to add a variety of forms of renewable generation to its power supply through a thoughtful process taking into account availability, project size and location, transmission issues, regulatory requirements and cost.

Decisions are made by the Dairyland Board of Directors, representing the needs and concerns of the entire cooperative membership. Hawkeye REC brings your questions and concerns to the decision-making process through representation by Hawkeye REC's director, Dean Fisher.

## Legislative Requirements

Dairyland needs to meet differing requirements in the four states where it does business, and—as importantly—anticipate future regulations through proper planning. A Renewable Portfolio Standard (RPS) is defined as the percentage of retail electric sales in the state which must be generated by renewable sources. These generally include wind, solar, geothermal and biomass generation. As it stands now, Wisconsin has an RPS of 10 percent by 2015; Minnesota has an RPS of 25 percent by 2025; Illinois calls for 8 percent by 2013; and Iowa requires utilities to offer a “green” program.

Renewable energy standards are under discussion in nearly every state and at the federal

level. Following passage of Minnesota's 25 percent RPS earlier this year, Wisconsin Gov. Jim Doyle expressed his support for Wisconsin obtaining 25 percent of its energy from renewable energy resources as well. Meanwhile, Illinois just sent a 25 percent by 2025 bill to its governor, which increases the renewable energy requirements for public utilities (but exempts cooperatives and municipal utilities); and Iowa briefly considered a 20 percent RPS, but opted instead to dedicate \$500 million to enhance the development of renewable energy infrastructure in its state.

On the federal level, a national RPS is anticipated at some point. The House of Representatives is expected to debate a 20 percent RPS by 2020 bill in August. Federal legislation is unlikely to preclude states from establishing their own, higher, RPS. Questions remain about small utility or cooperative exemptions, and how state laws will conform to a national standard.

Confused yet? Despite the complex regulatory situation, the implications for Dairyland and its member cooperatives are clear: more renewable energy generation will be required and plans are being made accordingly. As such, Dairyland has been steadily working to increase its already progressive renewable energy portfolio.

## What's Here and What's Ahead

Dairyland issued two requests for proposals (RFPs) earlier this year seeking renewable power resources from wind and biomass generation facilities.

Currently complicating wind expansion is the basic problem of supply and demand. The worldwide demand for wind generation has greatly increased costs and constricted turbine supply in the renewable market. Production of wind turbines is not currently

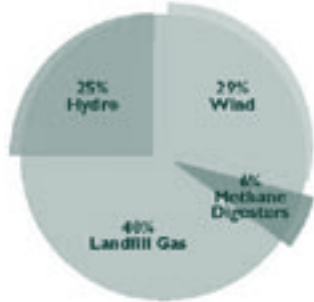


“...Dairyland has been steadily working to increase its already progressive renewable energy portfolio.”

meeting demand, sometimes requiring extensive waits for necessary equipment.

A summary of Dairyland's current and planned renewable generation follows:

### 2006 Renewable Energy Mix



For detailed information on Dairyland's renewable energy generation, see [www.dairyland.com](http://www.dairyland.com).

Hawkeye REC members can support renewable energy by participating in the Evergreen Program. For more information, contact Hawkeye REC or download participation forms from [www.hawkeyerec.coop](http://www.hawkeyerec.coop).

## Yes! I want to participate in Evergreen Renewable Energy.



**Please fill out the following form and mail to Hawkeye REC.**

Number of blocks of energy: ..... Amount **added** to my monthly bill:

- 1 block (100 kWh) ..... \$1.50
- 2 blocks (200 kWh) ..... \$3.00
- 3 blocks (300 kWh) ..... \$4.50
- 4 blocks (400 kWh) ..... \$6.00
- 5 blocks (500 kWh) ..... \$7.50
- Other: Please specify number of blocks .....
- Please provide me with more information.

*I understand that this amount is in addition to my monthly energy bill. Also, that my commitment is for one year and will continue monthly thereafter until I notify Hawkeye that I no longer wish to participate.*

Name: \_\_\_\_\_

Address: \_\_\_\_\_

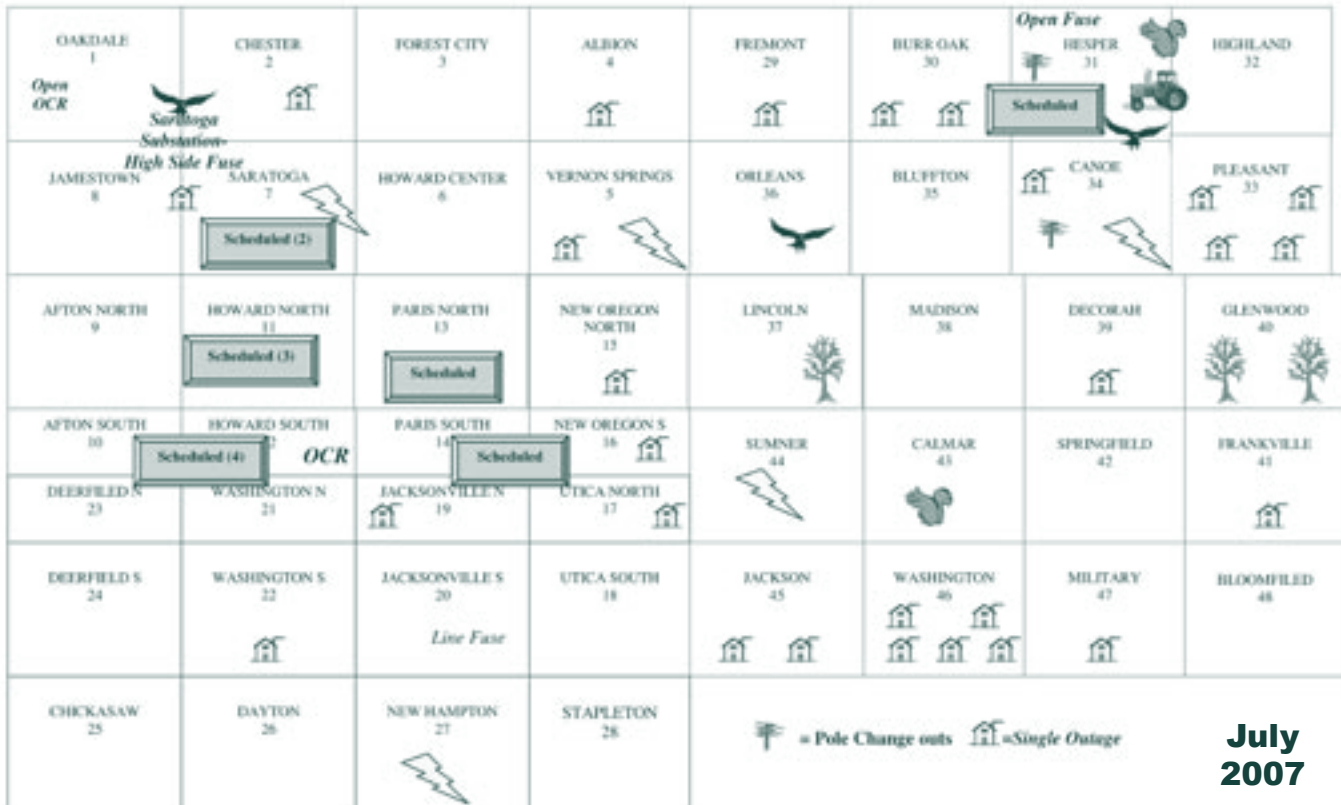
City \_\_\_\_\_ State \_\_\_\_\_ Zip \_\_\_\_\_

Home phone \_\_\_\_\_

Account No. \_\_\_\_\_

Signature \_\_\_\_\_ Date \_\_\_\_\_

# Map of Outages



**July 2007**

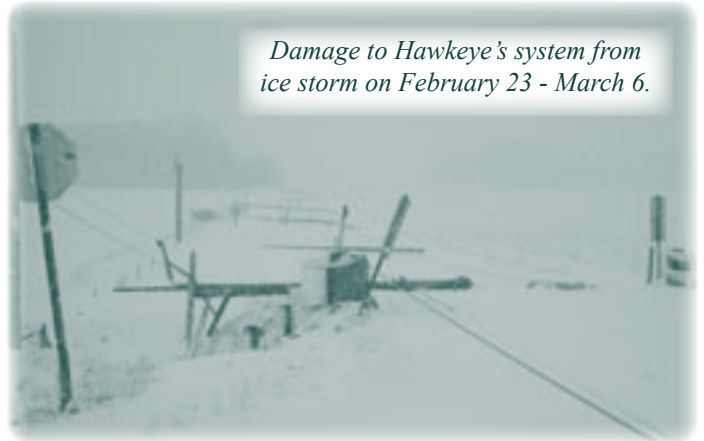
*Have you experienced an outage lately?*

## News from the Operations Department

# Ice Storm Projects Progress Report

- ▲ Hawkeye's contractor, Highline Construction, finished rebuilding 12.5 miles of three-phase line on Holly Avenue south to 200th Street east of Elma
- ▲ Highline Construction has started building a 5 mile three-phase project on Highway 63 north of New Hampton
- ▲ Hawkeye crews have completed a 3.5 mile single-phase project on 165th and 160th Streets east of Highway 63 to Robin Avenue near Schley
- ▲ Hawkeye crews have completed a 5 mile single-phase project on 170th Street east of Willow Ave between Cresco and Protivin
- ▲ Hawkeye's underground contractor, Tunnel Rats, continue to work on Ivanhoe Ave near New Hampton
- ▲ Hawkeye crews and contractors have 25 miles of single-phase line and 6.5 miles of three-phase line staked and ready to build

*Damage to Hawkeye's system from ice storm on February 23 - March 6.*



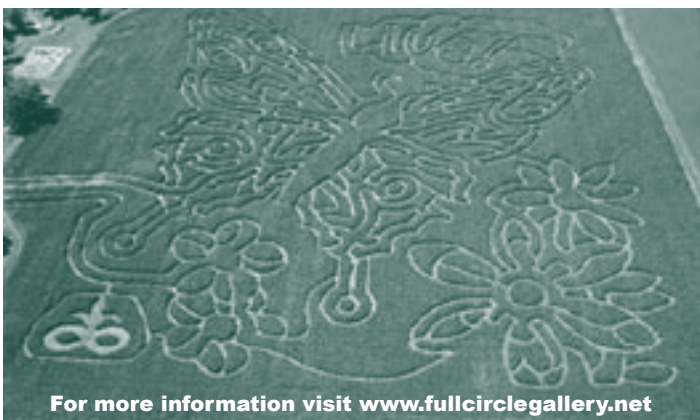
*This is the beginning of a long journey of 350 miles of line to be replaced.*

# Corn Maze

LIVE! This is the theme for this year's corn maze at Full Circle Gifts & Gallery in Cresco. The maze is a 14.5 acre field divided into two mazes designed in the shape of the Monarch Butterfly.

### Hours & Tickets:

Aug. 1-31 ..... Call for appointment  
Sept. 1-Oct. 31 ... Open Fri-Sun from 1 p.m.-9 p.m.  
(All other days, call ahead for an appointment.)  
Admission: ..... \$6 per person  
Children 4 and under free



For more information visit [www.fullcirclegallery.net](http://www.fullcirclegallery.net)

## Travel Opportunity!

### Australia & New Zealand

FROM THE OUTBACK TO THE GLACIERS

**FEBRUARY**  
**7-26,**  
**2008**



**\$6,199**  
Space is limited  
on this incredible  
journey,  
call today!

Join fellow Hawkeye REC members on the trip of a lifetime!

Melbourne • Alice Springs • Ayers Rock • Sydney  
Great Barrier Reef • Cairns • Christchurch • Queenstown  
Milford Sound • Mt. Cook National Park • 26 Meals  
Comfortable summer temperatures!

For brochures or more information, please contact:

Catherine Buboltz  
130 W. Clark St., Albert Lea, MN  
Phone: 800-328-4298  
Email: [4seasons@smig.net](mailto:4seasons@smig.net)




from 4 Seasons Vacations


# Compact Fluorescent Comparison

## They don't cost, They PAY.

Cost of electricity: **9.8¢ per kWh**  
 Hours used per day: **3 hours**

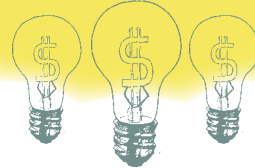


**Regular (incandescent) bulb:**  
 Power consumed: 60 watts  
 Cost of bulb: \$0.50  
 Lamp life: 750 hours  
 Lamp life: 8 months  
 Annual energy cost: \$6.44  
 Total bulbs required: 13 bulbs



**New CFL:**  
 Power consumed: 14 watts  
 Cost of bulb: \$2.20  
 Lamp life: 10,000 hours  
 Lamp life: 9.1 years  
 Annual energy cost: \$1.50  
 Total bulbs required: 1 bulb

Go to [www.hawkeyerec.coop](http://www.hawkeyerec.coop) to calculate other wattages.



**Bulbs are available to purchase at Hawkeye while supplies last:**

**14-watt (60-watt equivalent)**  
 \$1.50 + Tax (\$1.61)

**23-watt (100-watt equivalent)**  
 \$2.50 + Tax (\$2.67)

**Limit 10 per member.**

Total cost of bulbs and energy: \$65.30 minus \$15.92 = a \$49.38 payback on \$1.70 invested!

The difference in the cost between the two bulbs is \$1.70. If you invest that now, it will put \$4.94 back in your pocket every year, for a total of \$49.38 during the 9.1 year life of your investment.

That is equal to earning a 318% annual return on your \$1.70 investment.

*Welcome*

### Hawkeye REC welcomes New Members

- Kris Courtney ..... Decorah
- Kristi Hilpipre ..... Riceville
- Williams & Williams ..... Tulsa Ok
- Merlin & Sharon Studt..... Decorah
- Michael Weiss ..... Decorah
- Keith & Sharon Koehn..... Riceville
- Bruce Wulfsberg ..... Decorah
- Jason Borsheim ..... Mabel
- Scott & Sarah Kach..... Cresco
- Z & S Incorporated ..... New Hampton
- Troy Kaylor & Tonya Losee ..... Riceville
- Joe Andera..... Riceville
- Lonnie Lansing ..... Fort Atkinson
- Daniel Boothe ..... Ridgeway
- Michael Koch..... Cresco
- Bob Holkesvik ..... Decorah
- Judy Hageman..... Decorah
- Michael Nims..... Fort Atkinson
- Scott & Kris Vandekrol..... Decorah
- Julia M Rude ..... Decorah
- Justin Hovey..... Cresco

## The value of \$120



A family of four spends about \$120 for one day's admission to a water park. For \$120 you can power your home for about a month.

### The Value of Electricity



A Touchstone Energy® Cooperative 

# Reduce Energy Use During Peak Hours

**P**eak hours are the busiest times for your local electric cooperative, since many people are using electricity at the same time. In addition, it costs your co-op more to generate electricity when demand soars during peak periods—and the cost of your electricity also may rise. Obviously, using less electricity during peak periods can save your co-op—and you—money.

Here's how you can help during peak hours, which generally are on the hottest summer days between 4 and 9 p.m.:

- ▶ Shift household chores and activities away from peak periods. Wait to run your dishwasher until you go to bed, for instance.

- ▶ If you have air conditioning, turn the thermostat up when you are gone and at night. Cool only the rooms that you are using.
- ▶ Use the most energy-efficient appliances you have. Your microwave oven, for example, uses considerably less energy than your stove or cooktop.
- ▶ If you're buying a new appliance, make sure you get a highly efficient one. Look for "Energy Star" labels when you're evaluating different models.
- ▶ Be aware of your energy consumption, and try to get in the habit of using energy efficiently year-round.

Use the energy you need, but use it wisely! You'll help your co-op avoid building expensive new power plants—and that, in turn, will help keep your electric rates stable.

## Apple Pie Contest Winners



Congratulations to the winners of the Winneshiek County Fair apple pie contest sponsored by Hawkeye REC.

- 1st Place: Beth Phillips, Decorah**
- 2nd Place: Di Kovarik, Cresco**
- 3rd Place: Donna Lechtenberg, Spillville**



Front Row: Beth Phillips, Di Kovarik and Donna Lechtenberg.  
Back Row: Contest Judges REC employee Karen Pecinovsky, Rodeo Queen, and a representative from Viking Bank.

## New Employee

Welcome Jan!

**J**an Praska of Cresco is Hawkeye's newest employee. She started on August 7 as the operations assistant. Jan was previously employed at Donaldsons for 25 years and Feathertlite for seven years. She has a B.S. degree in business administration from Upper Iowa University. Jan's husband Marvin is employed at the Cresco post office. They have two children, Scott (27) who lives in Des Moines and Shaina (23) lives in St. Paul. Jan likes to read, quilt and bicycle in her spare time. Jan also mentors youth in our community.



# Recipes...

It's Back-to-School time! REC kids submitted their favorite recipes this month.



Send or e-mail your favorite recipe. If we print your recipe in our newsletter you'll receive \$5 off your next electric bill.



E-mail to: [mmoellers@hawkeyerec.com](mailto:mmoellers@hawkeyerec.com)

Sept. - Tailgate Parties

Oct. - Pork Chops

All recipes can be found on our website.

## Fudgesicles

1 large package instant chocolate pudding  
3 cups milk  
1/2 cup sugar

Mix and bring all ingredients to a boil stirring frequently. Pour into molds and let cool before freezing.

Dylan Elsbernd, Age 3½ • Decorah

## Almond Bark Cookies

2 lb. almond bark  
1 c. chunky peanut butter  
2 c. dry-roasted peanuts  
2 c. mini-marshmallows  
3 c. Rice Krispies

Melt almond bark in 200° oven or double boiler. Stir in remaining ingredients. Mix well. Drop by teaspoonful on wax paper. Makes 6 dozen. Can be frozen.

Kelly Rue, Age 11 • Ridgeway

## Cherry Cheesecake

1 (8 oz.) ctn. Cool Whip  
1 c. powdered sugar  
1 (8 oz.) pkg. cream cheese  
1 can pie filling (cherry)  
16 graham crackers, crushed (1 c.)  
1 T. sugar  
1/4 c. butter or substitute

**Crust:** Mix 2 tablespoons sugar with graham crackers (crushed) and butter. Press into buttered 10-inch pie tin of 9 by 9-inch pan (save some graham cracker crumbs to sprinkle on top).

**Filling:** Mix powdered sugar and cream cheese. Then add Cool Whip and spread the mixture over the crust. Pour the can of cherries over all. Then add the rest of the crushed graham crackers by sprinkling over the top.

Morgan Kuennen, Age 12 • Fort Atkinson

## Quick Macaroni & Cheese

1 c. dry macaroni  
4 c. boiling water

Cook over med. heat until done and drain water

1/3 c. nonfat dry milk  
2 T. flour  
1/2 t. dry mustard  
1/8 t. salt  
1/8 t. pepper  
3/4 c. water

Mix dry ingredients. Stir in water to smooth

1 c. shredded American cheese

Stir all ingredients into pan of cooked macaroni. Cook over low heat, stirring often until it thickens (about 10 minutes).

Yield: 4 Servings

235 Calories per serving

(this has less fat than traditional recipe!)

Leslie Ness • Age 10 • Waukon

## Scotcheroos

1 c. sugar  
1 c. light corn syrup  
1 c. creamy peanut butter  
6 c. Rice Krispies  
1 (6 oz. pkg) milk chocolate chips  
1 (6 oz. pkg) butterscotch chips

Bring sugar, corn syrup and peanut butter to a boil. Remove from heat and mix with Rice Krispies. Press into buttered 9X13 pan. Melt chips over hot water and spread over top. Chill for 5 minutes and cut into bars.

Lattie Crozier, Age 11 • Ridgeway

## DATES TO REMEMBER

### BILLING CYCLE DATES

- Aug. 25** Member reads meter and records on payment voucher. Please mail your bill today to make sure it arrives to Hawkeye by the 1st of September.
- Aug. 28** Automated payments from checking accounts and credit cards are processed.
- Sept. 1** Bills become delinquent.
- Sept. 10** Hawkeye REC prints bills based on August meter reading.
- Sept. 11** Bills are mailed to members from Dairyland in LaCrosse.

### OTHER EVENTS

- Aug. 31** Hawkeye REC Board Meeting
- Sept. 3** Office Closed-Labor Day



You can reduce your summer air conditioning costs

### Energy Saving Tips

- ▶ Set your thermostat up 4 degrees & use fans to circulate the air
- ▶ Install shades, blinds and awnings
- ▶ Insulate your attic
- ▶ Plant deciduous trees on the south side of your home



You can help minimize power costs by using energy wisely.

Please wait until after 8 p.m. before using major appliances.



*The Power Is Yours*

Box 90 - Cresco, Iowa 52136  
1-800-658-2243 or 547-3801  
[www.hawkeyerec.coop](http://www.hawkeyerec.coop)

### OFFICE HOURS

Monday thru Friday - 7:30 a.m. - 4:30 p.m.  
(Closed Sat., Sun., & Holidays)

### OUTAGES

**1-800-927-5265**

**IOWA STATE ONE CALL**  
**1-800-292-8989**

### BOARD OF DIRECTORS

Dean Fisher, President - Lawler  
Dean Nierling, Vice President - Burr Oak  
Dennis Piatek, Secretary/Treasurer - Elma  
Norman Dickman - Decorah  
John Hockspeier - Alta Vista  
Janelle Mahr - Lime Springs  
Roger Nibaur - Elma  
Charles Frana - Calmar  
Dennis Young - Decorah

### PERSONNEL

Tom Miller, CEO & General Manager  
Roger Halverson, Operations Manager  
Jim Murphy, Information Tech. Manager  
Cindy Christensen, Communications Manager  
Peggy Berg, Chief Financial Officer  
Pat Boyle, Business Dev./Mbr. Serv. Manager

**EDITOR**  
Meagan Moellers

Hawkeye REC  
Box 90  
Cresco, Iowa 52136

PRSR STD  
U.S. Postage  
**PAID**  
La Crosse, Wis.  
Permit No. 372